

FUNDAMENTALS OF INFORMATION SYSTEMS

ITE101 LESSON 2

DATA AND ITS ROLE IN BUSINESS

- A database is a sorted-out accumulation of interrelated information mirroring a noteworthy part of company's exercises.
1. Information systems catch information from the association (interior information) and its condition (outer information).
 2. They store the database things over a broad timeframe.
 3. At the point when data are required, the suitable information things are controlled as essential, and the client gets the subsequent data.
 4. Contingent upon the sort of information systems, the data yield may take the shape an inquiry reaction, choice result, master framework counsel, exchange archive, or a report.

QUALITIES OF EXACT INFORMATION

- Convenient Available
- Finish
- Brief
- Applicable
- Exact
- Frame

INTERNAL AND EXTERNAL INFORMATION

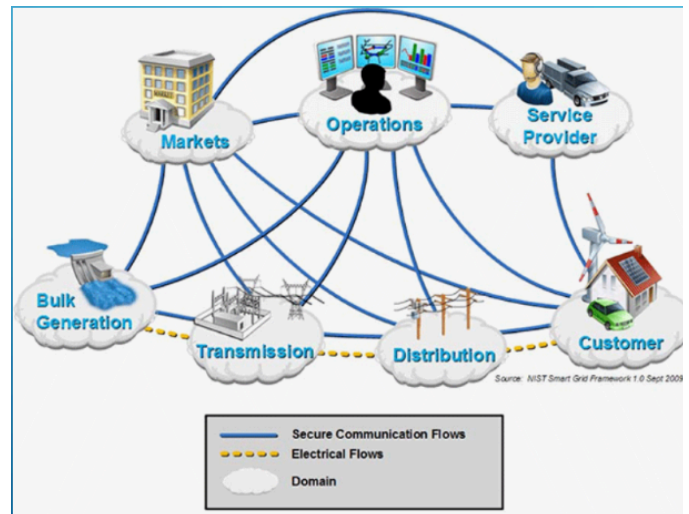
Internal

- System Level | Application Level

External

- News Sites | RSS Feeds | Blogs | Wikis | Social Media APIs

FRAMEWORKS



DATA SYSTEMS IN THE FEEDBACK LOOP OF AN ORGANIZATION

Feedback → Insight → Action → (LOOP)

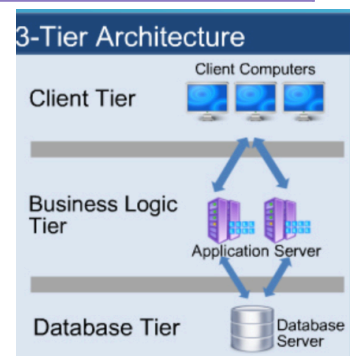
SEGMENTS OF INFORMATION SYSTEMS

1. Equipment
2. Programming
3. Databases
4. Media transmission
5. HR
6. Systems

A NETWORK INFORMATION SYSTEM: THREE-TIER ARCHITECTURE

3-Tier Architecture:

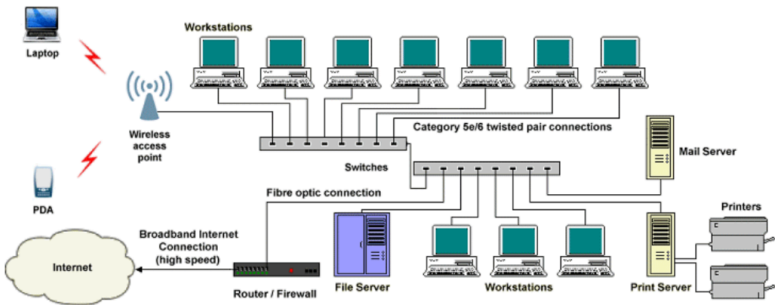
- Client Tier
- Business Logic Tier
- Database Tier



FUNDAMENTALS OF INFORMATION SYSTEMS

ITE101 LESSON 2

A DOWNSIZED NETWORK INFORMATION SYSTEM: CLIENT/SERVER ARCHITECTURE



FRAMEWORKS ARCHITECTURE FOR REMOTE ACCESS FROM VIRTUAL OFFICES:

Human Resources

HRIS Functions

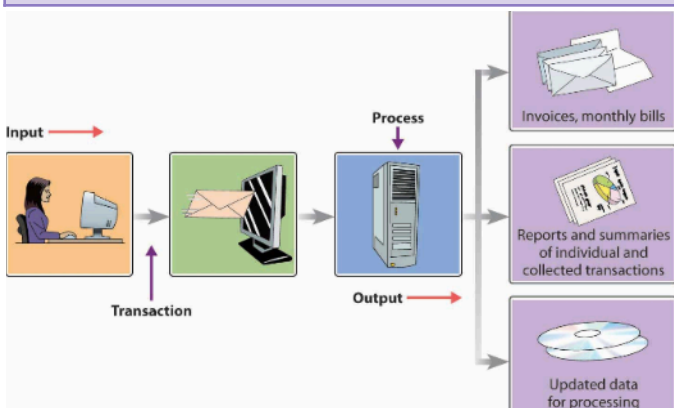
1. Performance Evaluation
2. Recruitment
3. Personal Self Service
4. Leave & Absence
5. Payroll
6. People Administration
7. Compensation & Benefits
8. Training and Development

KINDS OF INFORMATION SYSTEMS

Associations utilize a few kinds of information systems. These include:

1. Exchange Processing Systems (TPS)
2. Administration Reporting Systems (MRS)
3. Choice Support Systems (DSS)
4. Official Information Systems (ESS)
5. Office Information Systems (OIS)
6. Proficient Support Systems
7. Master Systems

EXCHANGE PROCESSING SYSTEMS

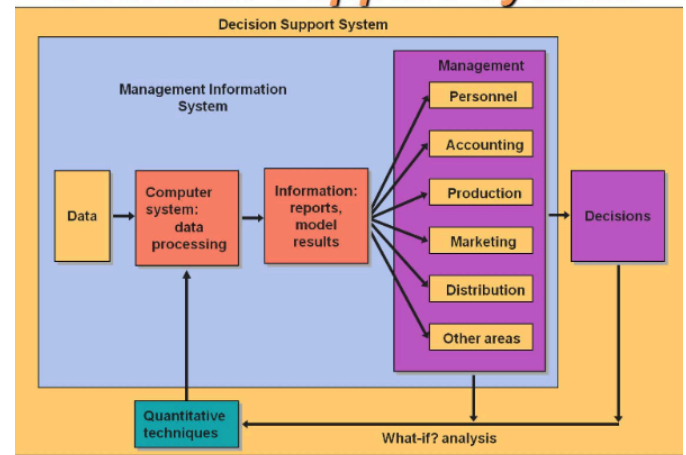


ADMINISTRATION REPORTING SYSTEMS



CHOICE SUPPORT SYSTEM

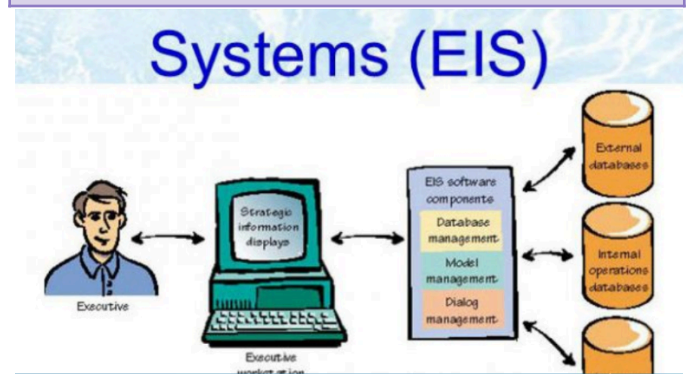
Decision Support System



Capabilities of a Decision Support System

- **Support for problem-solving phases:**
 - A specific DDS might support only one or a few phases
- **Support for various decision frequencies:**
 - Ad hoc DDS is concerned with situations or decisions that come up only a few times
 - Institutional DDS handles situations or decisions that occur more than once

OFFICIAL INFORMATION SYSTEM



FUNDAMENTALS OF INFORMATION SYSTEMS

ITE101 LESSON 2

EIS are utilized to:

1. Streamline the execution of the organization
2. Evaluate the business condition
3. Create vital bearings for the organization's future

OFFICE INFORMATION SYSTEMS (OIS)

OIS are utilized to:

1. Help oversee record keeping in an electronic configuration
2. Handle messages, for example, electronic mail, copy, and phone
3. messages
4. Encourage remotely coordinating and electronic gatherings
5. Encourage the utilization of the Internet for correspondence and access to data
6. Encourage the utilization of assignment arranged groups using groupware.

SUPPORTING MANAGERS WITH INFORMATION SYSTEMS

Types of Management Support Systems

- **Management Information Systems (MIS)**
 - Reports and displays
 - *Example:* daily sales analysis reports
- **Decision Support Systems (DSS)**
 - Interactive and ad hoc support
 - *Example:* a what-if analysis to determine where to spend advertising dollars
- **Executive Information Systems (EIS)**
 - Critical Information for executive and managers
 - *Example:* easy access to actions of competitors

The three administration situated sorts of framework:

1. Management revealing frameworks.
2. Decision emotionally supportive networks.
3. Executive information systems.

Various types of help to the three levels of administration:

1. Vital
2. Strategic
3. Operational

Henry Mintzberg ordered every single administrative movement into ten jobs falling into **three classifications:**

- Relational Role
- Enlightening Role
- Decisional Role