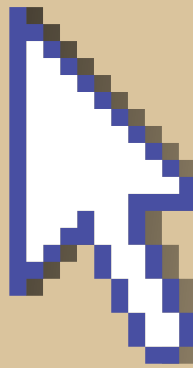


# HISTORY OF COMPUTER

FROM ANCIENT CALCULATORS TO MODERN  
SUPERCOMPUTERS



# WHAT IS A COMPUTER?

## Definition

An electronic device for storing and processing data, typically in binary form, according to instructions given to it in a variable program.

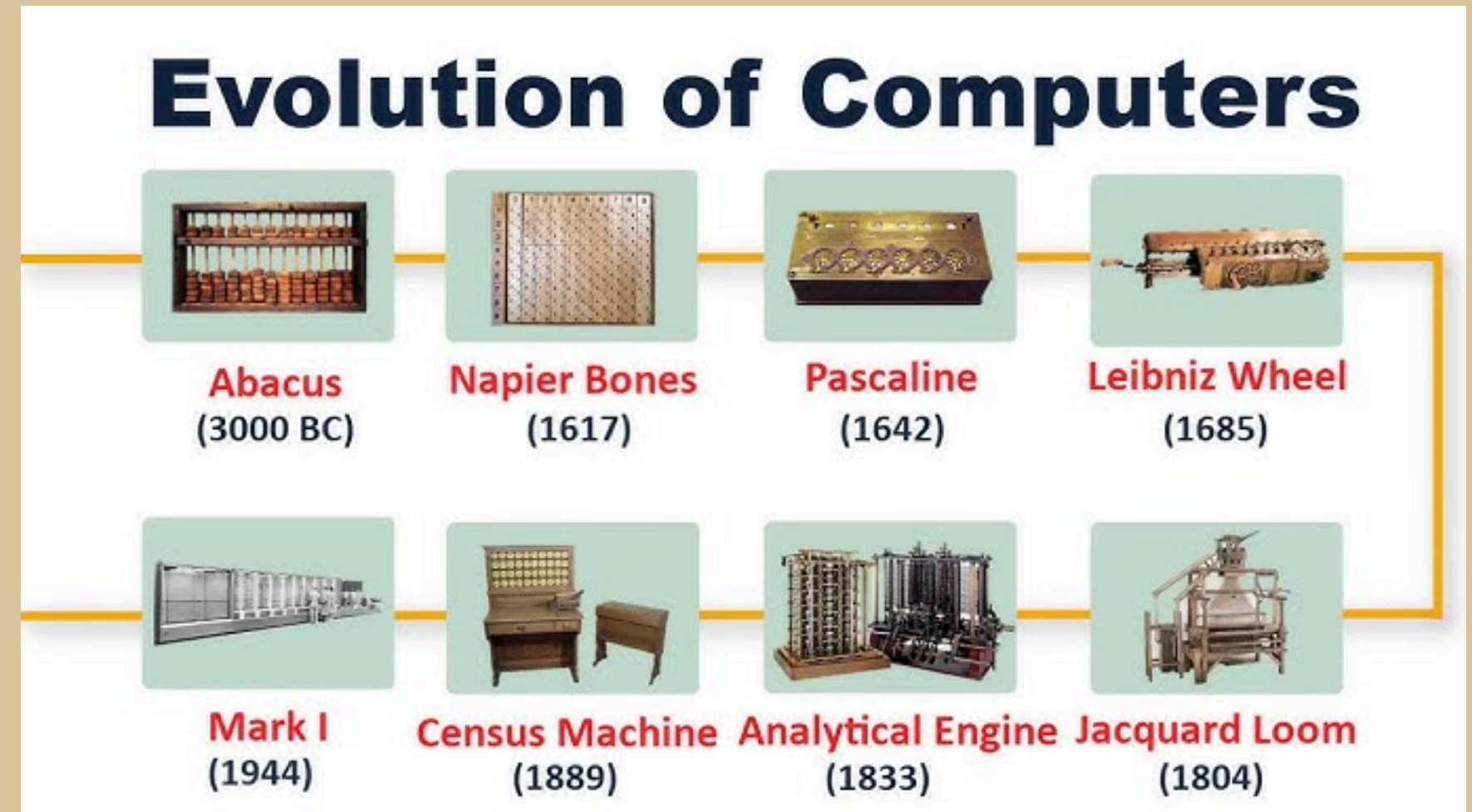
## Original Meaning

Before electronics, the term "computer" was a job title. It referred to a person, often a woman, who performed mathematical calculations.



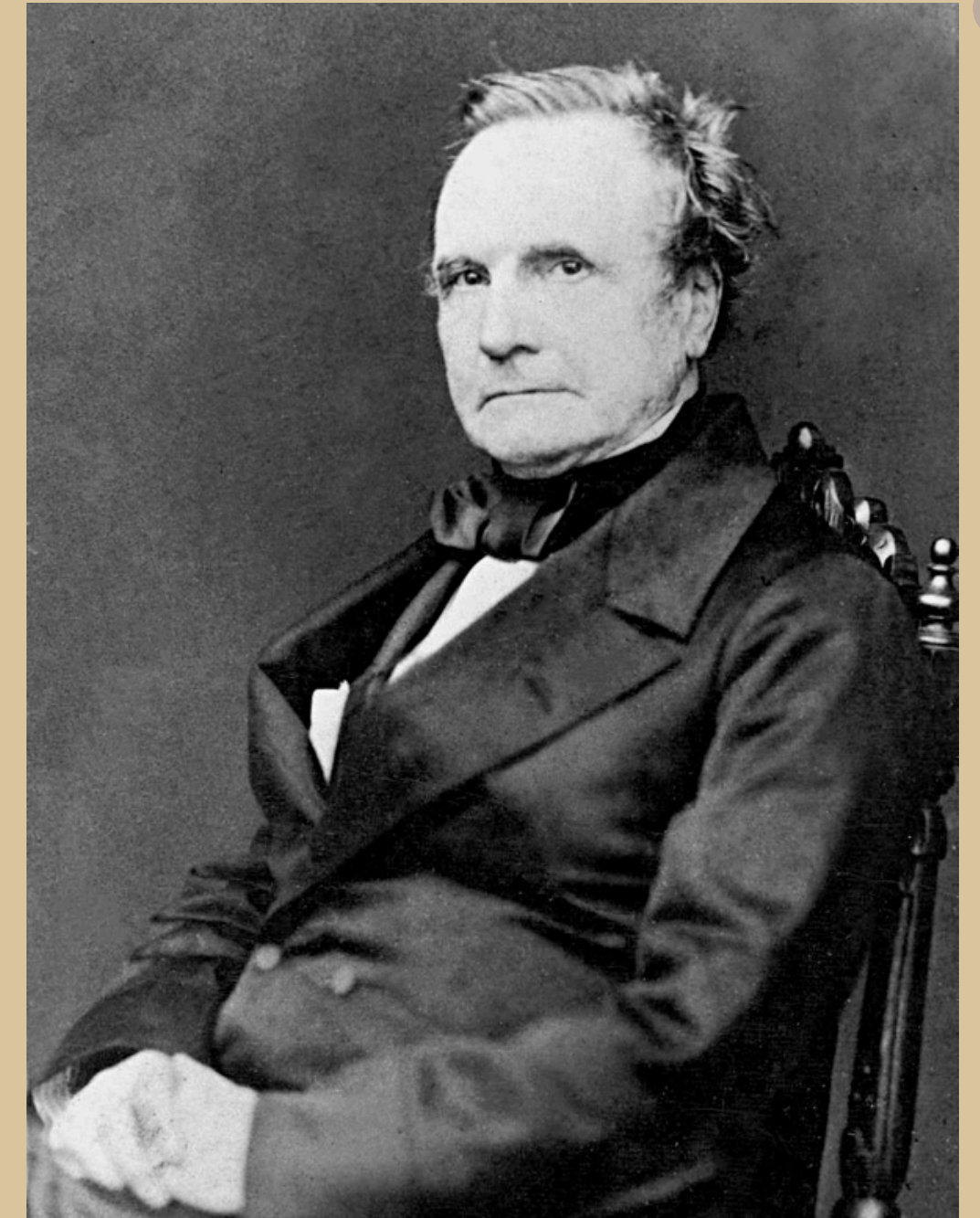
# EARLY CALCULATING DEVICES

- The Abacus (c. 2700 BC): One of the very first tools for performing arithmetic, used for centuries across different cultures.
- Pascal's Calculator (1642): Blaise Pascal created a mechanical calculator using gears and wheels to perform addition and subtraction.
- Leibniz Wheel (1673): Gottfried Leibniz improved on Pascal's design, creating a machine that could also perform multiplication and division.



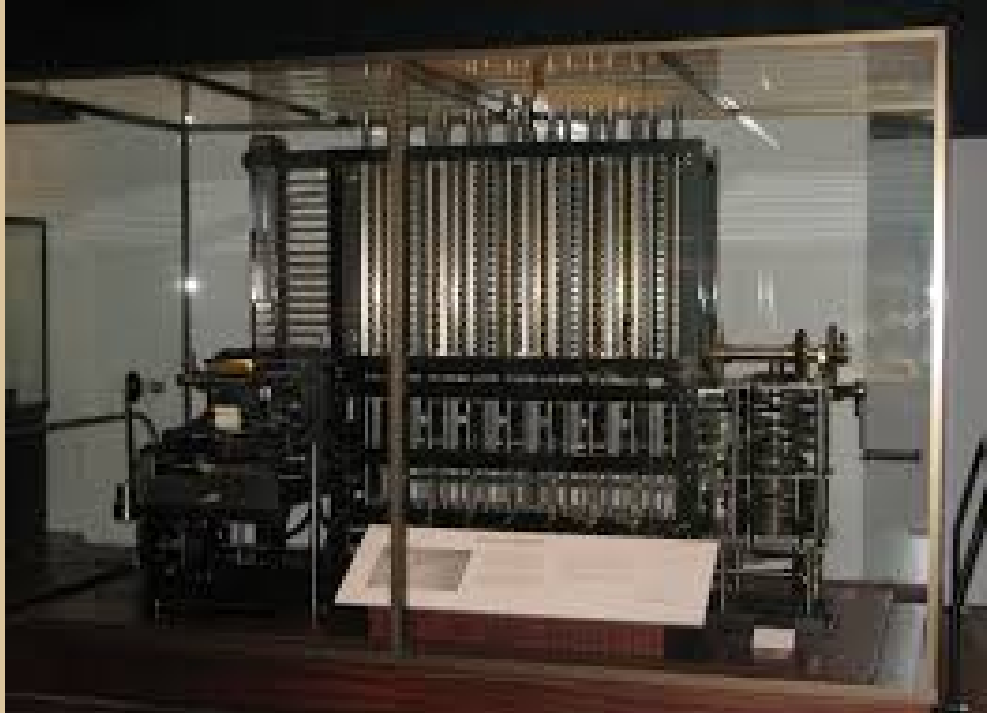
# THE 19TH CENTURY: MECHANICAL ERA

**Charles Babbage:** Considered the "father of the computer." He designed mechanical computing engines.

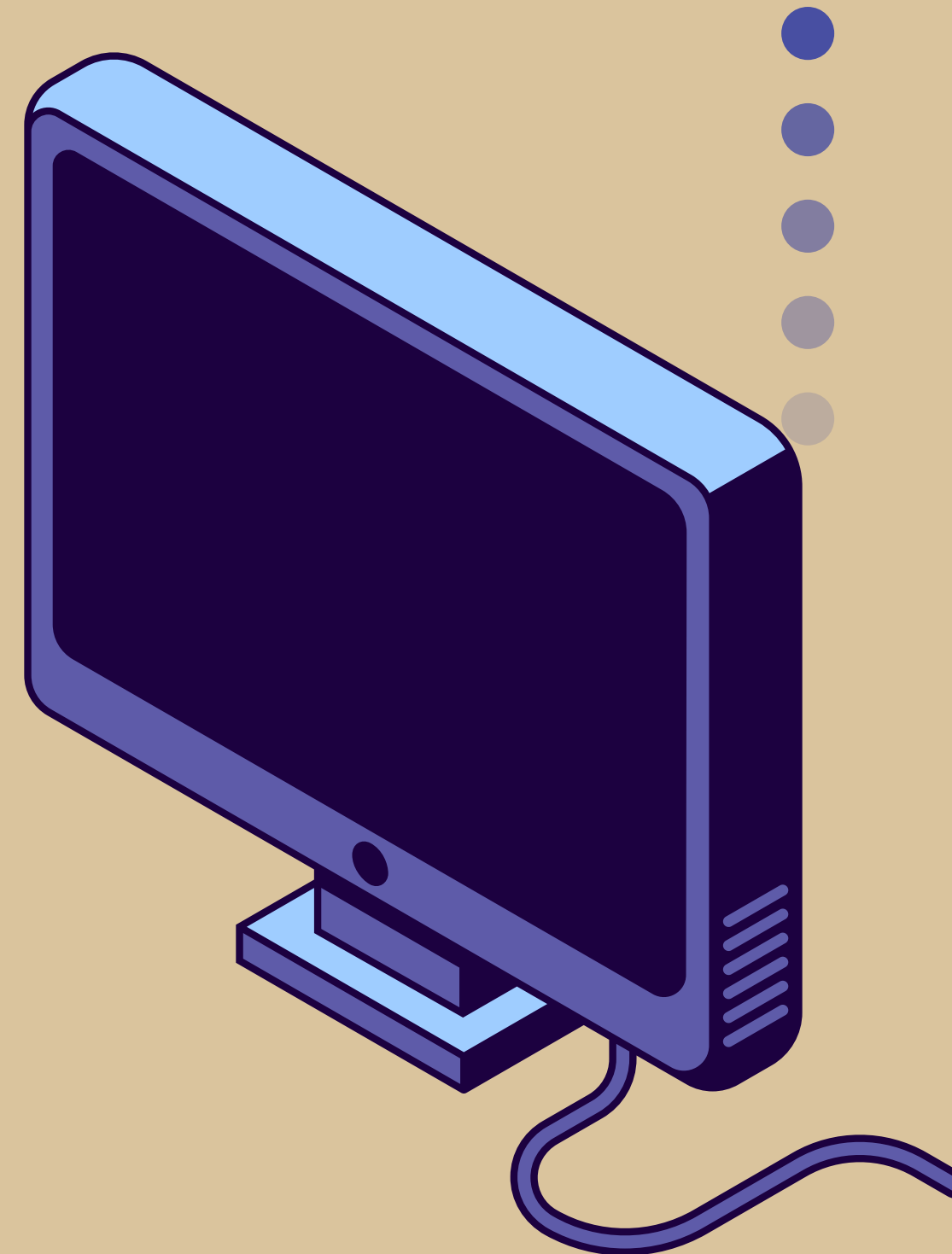


# DIFFERENCE ENGINE (1822):

Babbage's concept for a machine to automatically compile mathematical tables (e.g., logarithm tables).



No.	0	1	2	3	4	5	6	7	8	9	Diff.
1550	1903317	3597	3877	4157	4438	4718	4998	5278	5558	5838	
51	6118	6398	6678	6958	7238	7518	7798	8078	8357	8637	
52	8917	9197	9477	9757	0038	0318	0598	0878	1155	1435	
53	1911715	1994	2274	2553	2833	3113	3392	3672	3951	4231	279
54	4510	4790	5069	5348	5628	5907	6187	6466	6745	7025	1 28
55	7304	7583	7862	8142	8421	8700	8979	9259	9538	9817	2 34
56	1920096	0375	0654	0933	1212	1491	1770	2049	2328	2607	3 34
57	2886	3165	3444	3723	4002	4281	4559	4838	5117	5396	4 112
58	5675	5953	6232	6511	6789	7068	7347	7625	7904	8183	5 140
59	8461	8740	9018	9297	9575	9854	0132	0411	0689	0968	6 167
60	1931246	1524	1803	2081	2359	2638	2916	3194	3473	3751	7 195
1561	4029	4307	4585	4864	5142	5420	5698	5976	6254	6532	8 223
62	6810	7088	7366	7644	7922	8200	8478	8756	9034	9312	9 251
63	9590	9868	0145	0423	0701	0979	1257	1534	1812	2090	
64	1942367	2645	2923	3200	3478	3756	4033	4311	4589	4867	
65	5143	5421	5698	5976	6253	6531	6809	7087	7364	7642	
66	7918	8195	8472	8749	9026	9304	9581	9858	10135	10392	
67	1950690	0967	1244	1521	1798	2075	2352	2629	2906	3183	
68	3180	3457	3734	4011	4288	4565	4842	5119	5396	5673	

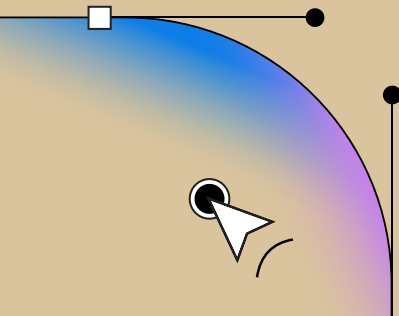
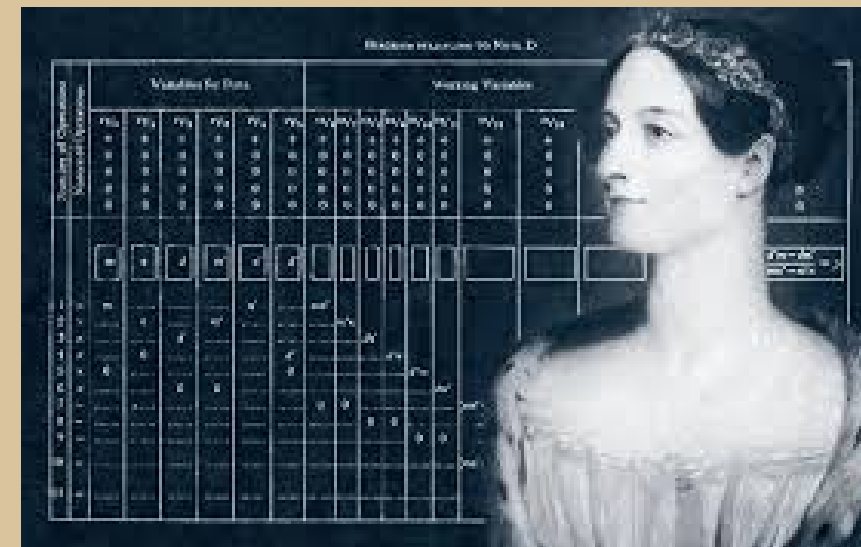


# ANALYTICAL ENGINE (1837)

A more complex, programmable design that was the first for a general-purpose computer. It was never fully built in his lifetime.

# ADA LOVELACE

A mathematician who wrote about Babbage's Analytical Engine. She is considered the first computer programmer for writing algorithms for the machine.



# DAWN OF ELECTRONIC COMPUTING

First Generation (1940s-1950s)

1.

## Key Technology: Vacuum Tubes

These large, fragile glass tubes controlled electric current but generated immense heat and were prone to burning out.

2.

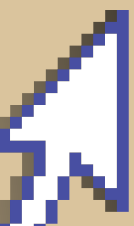
## ENIAC (1945)

The Electronic Numerical Integrator and Computer was a massive machine used for military calculations. It filled a 30x50 foot room.

3.

## UNIVAC I (1951)

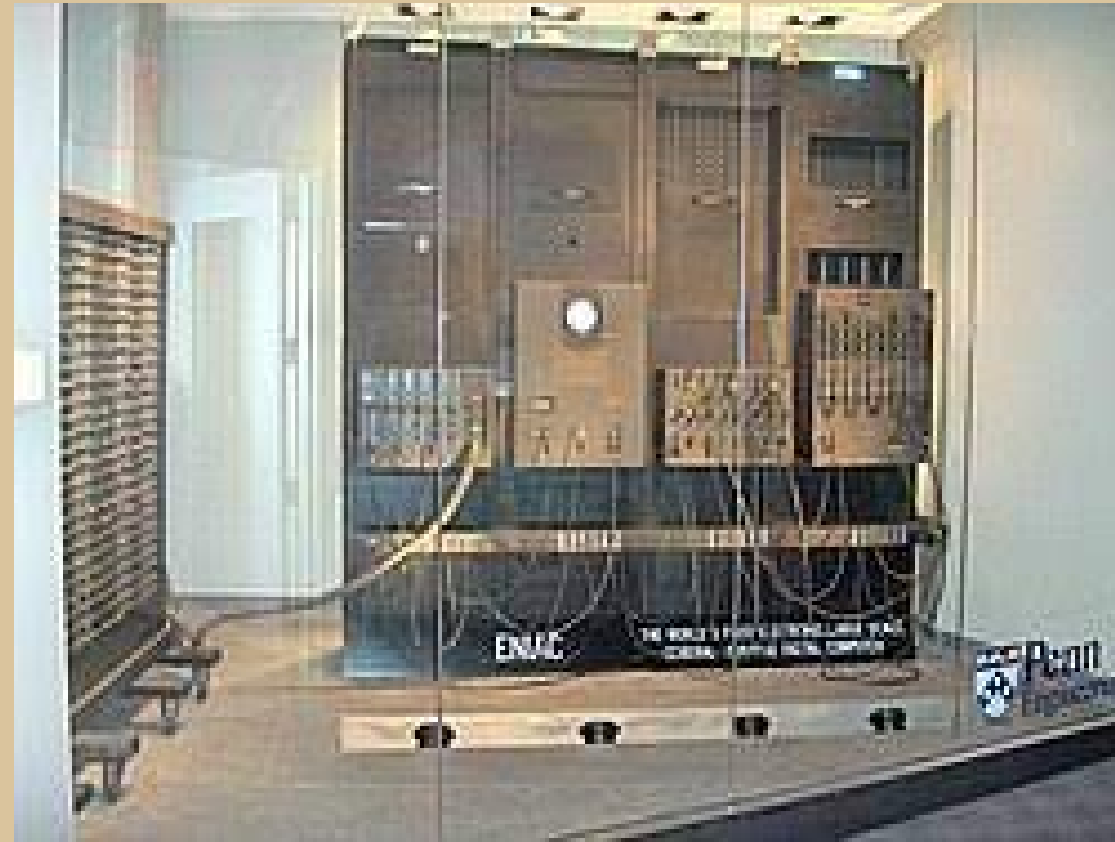
The first commercially successful computer, famous for predicting the 1952 presidential election.



Vacuum Tubes



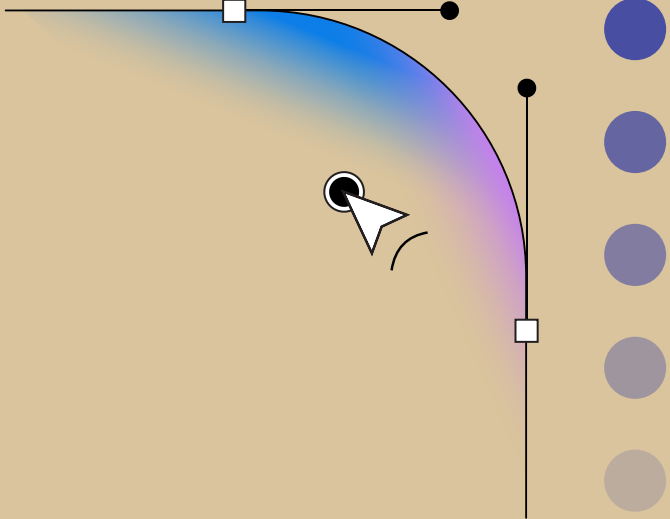
ENIAC



UNIVAC



# QUIZ TIME!



**1. What was the original meaning of the term "computer" before the electronic era?**

**A) A type of mechanical calculator**

**B) A job title for a person who performed mathematical calculations**

**C) An electronic device for storing and processing data**

**D) A synonym for the Analytical Engine**

**2. Which invention is considered one of the very first tools for performing arithmetic, dating back to approximately 2700 BC?**

- A) Napier Bones**
- B) Pascaline**
- C) Abacus**
- D) Census Machine**

**3. Who is considered the "father of the computer" for designing mechanical computing engines like the Difference Engine and the Analytical Engine?**

- A) Blaise Pascal**
- B) Gottfried Leibniz**
- C) Charles Babbage**
- D) Alan Turing**

**4. What was the key technology used in the First Generation of electronic computing (1940s-1950s) that was large, fragile, and generated immense heat?**

- A) Transistors**
- B) Integrated Circuits**
- C) Vacuum Tubes**
- D) Microprocessors**

**5. Which computer is famous for being the first commercially successful computer and for predicting the 1952 presidential election?**

- A) ENIAC**
- B) Mark I**
- C) Analytical Engine**
- D) UNIVAC I**

**THANK  
YOU!**

