

Chapter I

Introduction

"If you know the enemy and know yourself" you need not fear the result of a hundred battles. If you know yourself but not the enemy, for every victory gained you will also suffer a defeat. If you know neither the enemy nor yourself" you will succumb in every battle."

Sun Tzu, The Art of War

Geographic Location of Checkia



Figure 1.1 – Depicted in the map is the location of Democratic Republic of Checkia and its proximity to the Philippines

0101. Checkia or the Democratic Republic of Checkia (DROC), as its official name, a once communist-ruled island country is situated in the middle portion of South East Asia. The country lies about south of Vietnam and surrounded by countries like the Malaysia, Singapore and Brunei. This country is mainly a single island with about the size of Cambodia covering a land area of about 180,000 square kilometers.

0102. With its prime location in the South East Asia, Checkia have rapidly evolved from rural to urbanized country primarily engaged in trading.

0103. Checkia’s climate, like that of much of the rest of Southeast Asia is dominated by monsoons, which are known as tropical wet and dry because of the distinctly marked seasonal differences. The monsoonal air-flows are caused by annual alternating high pressure and low pressure over the nearby landmass. In summer, moisture-laden air—

the southwest monsoon—is drawn landward from the Indian Ocean. The flow is reversed during the winter, and the northeast monsoon sends back dry air. The southwest monsoon brings the rainy season from mid-May to mid-September or to early October, and the northeast monsoon flow of drier and cooler air lasts from early November to March. Temperatures are fairly uniform throughout the area, with only small variations from the average annual mean of around 25 °C.

Checkia Strategic Objectives

Sustaining Economic Growth and Development

0104. Checkia aims to sustain its economic growth. Its incomplete transition to a market economy has resulted in laws, regulations, and policies governing the tradable goods and services sectors, market access, and foreign direct investment that disadvantage foreign counterparts. Checkia continues to operate as a centrally controlled and planned economy. It restricts inbound investment, limits other countries' exports, and pursues state-guided investment overseas, including in strategic sectors.

0105. Checkia's leaders continue to advance its ambitious agenda of military modernization while pursuing economic growth and improving technological strength. They increasingly see other countries as adopting a more confrontational approach in an attempt to contain its rise. Reorganizing Checkia's programs for its development have sparked concerns about its intentions, thus, its leaders have softened their rhetoric when promoting programs without altering said programs' strategic goals.

0106. Checkia sees itself as growing its economic and technological strength by “leaps and bounds,” strengthening rule of law, growing the middle class, and improving living standards while addressing income disparity. In the next four decades, its leaders believe that Checkia will become a prosperous, modern, and strong socialist country with a “world-class” military.

Development of Military Power

0107. Checkia's leaders are committed to developing military power commensurate with that of a great power to be able to defend its national sovereignty and territorial integrity and ultimately emerge as the preeminent power in the South East Asian region. They want to be able to fight and win wars, deter potential adversaries, and secure their national interests overseas, including a growing emphasis on the importance of maritime and information domains, offensive air operations, long-distance mobility operations, and space and cyber operations. The NRA also continues to implement the most comprehensive restructure in its history to become a force capable of conducting complex joint operations.

Stable Domestic and International Environment

0108. Checkia uses diplomacy and public messaging at key regional forums and bilateral meetings to soften concerns about its intentions and to present itself as a key regional leader. Checkia reiterates that the region needed to uphold multilateralism, strengthen free trade, and safeguard the rules-based international order. These reflects

Checkia's preference for a stable domestic and international environment that will accommodate its rise to regional preeminence and facilitate its national goals and strategic objectives.

Civil-Military Integration

0109. Civil-Military Integration (CMI) became a military hardware modernization strategy and is evolving as Checkia moved from primarily acquiring foreign defense technologies to modernizing its industrial base and developing domestic defense technologies. Checkia's leaders have elevated CMI to a national strategy focused on aligning civil and defense technology to achieve greater efficiency, innovation, and growth. This is to support the completion of military modernization by 2030 and developing a "world-class" military by 2040. Its national CMI strategy goes beyond hardware modernization to include initiatives in the education, personnel, investment, infrastructure, and logistics sectors.

Checkia-Philippines Relationship

0110. The Philippines and Democratic Republic of Checkia (DROC) are two states located inside the South China Sea (SCS). Both states have been traditional trading partners for centuries and despite the different systems of government, with the Philippines being a democracy and DROC under communist rule, have maintained robust economic and cultural ties.

0111. In the late decades, DROC began to adopt a form of "free market" economy and emerged as an economic power to rival that of the West. Along with its economic might, this country also began to develop its military capabilities. However, DROC realized that it needs additional resources to fuel its economy and feed its growing population.

0112. The SCS along with West Philippine Sea (WPS) is considered as one of the most important waterways in the world today, where an estimated \$4 trillion worth of ship-borne commerce pass through annually. In addition, there are yet untapped oil and gas deposits within waters and islets of WPS. With this, Checkia realized that control of the SCS and WPS is vital to its national security interests. Using its superior military, DROC have proceeded to occupy and develop several atolls, reefs and islets in the SCS and WPS. Aside from the Philippines, SCS and part of WPS are also claimed by Checkia, China, Vietnam, Malaysia and Brunei. At the same time, other claimant states started developing its occupied islets and territories and acquiring more sophisticated weaponry with Checkia as the most aggressive in the region.

Checkia-Philippines Conflict

0113. There have been several tense encounters in the WPS in recent years involving the Philippines and Checkia. In 2014, the relationship between the two states reached a low point after the Philippine Navy (PN) tried to arrest Checkian fishermen poaching in Philippine-claimed waters near the Kalayaan Group of Islands (KGI). DROC responded by sending several large coast guard ships in the area, leading to a maritime stand-off lasting several months. This was only resolved after the United Nations and the US brokered an agreement for both sides to withdraw its ships. However, after the

Philippines withdrew, Checkia refused to honor the agreement and proceeded to occupy several islets in the KGI.

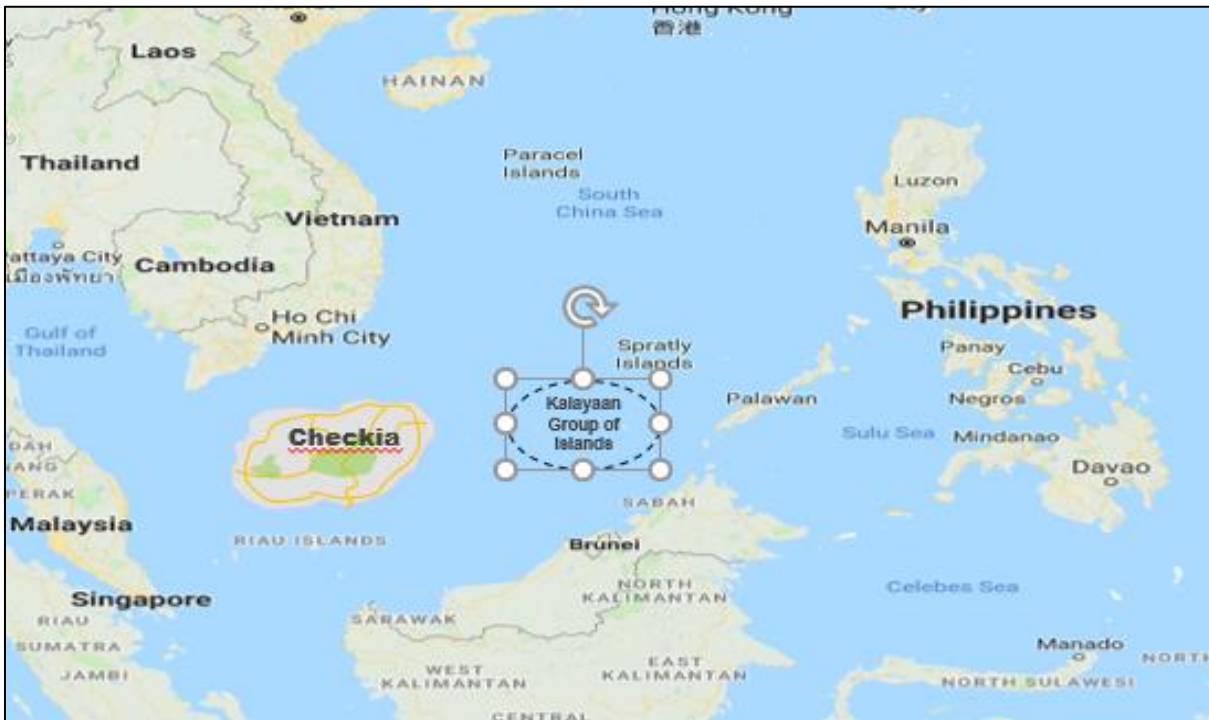


Figure 1.2 – The location of Kalayaan Group of Islands (KGI) contested by several South East Asian countries including DROC

0114. DROC’s Armed Forces, the National Republican Army (NRA), continued to aggressively develop its occupied islets and reefs by building airstrips, emplacing radar systems and missile defenses in the KGI and declaring the disputed area off limits to non-Checkian fishermen.

0115. By late 2015, almost the entire WPS is under DROC control with the country’s Coast Guard ships and warplanes constantly patrolling the area and preventing Filipino fishermen from its traditional fishing grounds.

0116. The Philippines remained steadfast and the Philippine Coast Guard (PCG) continues to conduct normal maritime patrol in the KGI area. Meanwhile, the United Nations urged all claimant states to settle their differences through peaceful, diplomatic means and in accordance with the rule of law.

0117. In 2017, vast oil and mineral deposits were discovered in Balabac and Bugsuk Islands, located off the southern tip of Palawan Island and part of the disputed territories claimed by Malaysia, China, Checkia and the Philippines. The Philippines claim both islands as within its exclusive economic zone (EEZ).

0118. In 2019, DROC’s NRA-Navy conducted a naval blockade against a PCG ship conducting patrol in KGI. This incident heightened the tension between the two countries. In February 2020, a NRA-Navy destroyer sunk a PCG ship conducting normal maritime patrol in KGI further claiming that the whole KGI is well within Checkia’s territory.

Chapter II

General Factors

Political

The Constitution

0201. The Constitution of the Democratic Republic of Checkia is a changing document. The first Constitution was declared in 1940. After two intervening versions enacted, the current Constitution was declared in 1986. There were significant differences between each of these versions, and the 1986 Constitution has subsequently been amended twice and lately in 2019. In addition, changing Constitutional conventions have led to significant changes in the structure of DROC government.

0202. There is no special organization tasked with the enforcement of the DROC's Constitution. Furthermore, under the legal system of DROC, courts do not have the general power of judicial review and cannot invalidate a statute on the grounds that it violates the Constitution.

0203. The constitutional changes of 2019 are of great importance since they represent a consolidation of power of the current President. The five-year term limit on the positions of President and Vice-President has been abolished, allowing the current President to serve as long as he wishes.

The Politburo

0204. Every significant decision affecting DROC is first discussed and approved by a handful of men who sit on the party's Political Bureau or Politburo which is the nexus of all power in this nation of 90 million. The 30-member Politburo is elected by the party's Central Committee. New Politburo members are chosen only after rigorous discussion and investigation of their backgrounds, experience and views. To reach the top, people need a strong record of achievement working for the party, to have the right patrons, to have dodged controversy, and to have avoided making powerful enemies.

0205. Recently, the wealth generated by DROC's economic reforms has led some analysts to suggest the power of the center is waning. It is pointed out that party secretaries of large provinces oversee its co-equally large populations and that their tax revenues are vital to DROC.

0206. Formally, the power of Politburo members stems from their positions in the decision-making body. But in DROC, personal relations count much more than job titles. A leader's influence rests on the loyalties he or she builds with superiors and proteges, often over decades.

0207. DROC's most senior decision-making body is the Sitting Committee of the Politburo which works as a kind of inner cabinet and groups together the country's most influential leaders. Members are elected to serve for a term of seven years.

0208. How the Sitting Committee operates is secret and unclear, but its meetings are thought to be regular and frequent, often characterized by blunt speaking and disagreement. Although policy disagreements and factional fighting are widely believed to take place in private, it is extremely rare for these to break into the public domain.

0209. Members of the Sitting Committee also share out the posts of party General Secretary, Premier, Chairman of the National Congress, and Head of the Discipline Inspection Commission.

0210. The Politburo controls three other important bodies and ensures the party line is upheld through these bodies. These are: The National Congress or parliament; the State Council, the government's administrative arm; the Military Affairs Commission which controls the armed forces.

0211. The President of DROC is the head of state. The Premier of DROC is the head of the government and leads the State Council. Finally, it should be noted that senior leaders sometimes retain great influence over decisions and appointments long after they officially step down from power. Part of the reason the elders wield such influence is because of the patron-protege nature of Chekian politics.

The Central Committee

0212. The Central Committee is elected once every five years by the Congress of the Communist Party of DROC although in fact almost all of these people are approved in advance. This Central Committee has 100 full members and 50 lower-ranking or "alternate" members". It meets every couple of months.

0213. The Central Committee is, formally, the "party's highest organ of authority" when the National Congress is not in session. According to the Party Constitution, it is vested with the power to elect the General Secretary and the members of the Politburo, its Standing Committee, and the Military Affairs Commission, and to endorse the composition of the Discipline Inspection Commission. It also oversees work of various powerful national organs of the party.

The National Congress

0214. Under DROC's 1986 constitution, the most powerful organ of state is meant to be the Congress, DROC's unicameral legislature. However, the reality is that this is little more than a rubber stamp for party decisions.

0215. The Congress is made up of 150 delegates elected by the country's provinces, autonomous regions, municipalities and the armed forces. Delegates hold office for five years. The full Congress is convened for one session each year.

0216. In theory, the Congress has the powers to change the constitution and make laws. But it is not, and is not meant to be, an independent body in countries' sense of a parliament. For a start, about 50% of its delegates - and almost all its senior figures - are also party members. Their loyalty is to the party first, the Congress second. What

actually tends to happen, therefore, is that the party drafts most new legislation and passes it to the Congress for "consideration", better described as speedy approval.

0217. The Congress has shown some signs of growing independence over the past decade. It delayed passing a law bringing in an unpopular fuel tax. It has also been given greater leeway drafting laws in areas like human rights.

0218. The formal position is that Congress "elects" the country's highest leaders, including the State President and Vice-President, the Chairman of the government's own Military Affairs Commission, and the President of the Supreme Court.

The State Council

0219. The State Council is the cabinet which oversees DROC's vast government machine. It sits at the top of a complex bureaucracy of commissions and ministries and is responsible for making sure party policy is implemented from the national to the local level.

0220. In theory, the State Council answers to the Congress, but more often the State Council submits legislation and measures which the Congress then approves.

0221. The State Council's most important roles are to draft and manage the national economic plan and the state budget, giving it decision-making powers over almost every aspect of people's lives. It is also responsible for law and order.

0222. The full council meets once a month, but the more influential Sitting Committee comes together more often. This committee is made up of the country's premier, four vice-premiers, state councilors and the secretary-general.'

The Military Affairs Commission

0223. Checkia's armed forces, the National Republican Army (NRA) - currently at approximately 100 thousand strong - has always defended the party as much as national borders. During the early years of communist rule, most of the country's leaders owed their positions to their military success during the civil war, and links between them and the NRA remained very close. However, as this generation has died off and reforms have been introduced to make the armed forces more professional, the relationship has shifted subtly.

0224. The party's control over the armed forces and their nuclear arsenal is institutionalized through the Central Military Affairs Commission. Currently, the 9-member Commission has a civilian chairman, and eight uniformed regular members. The eight are the Minister of Defense, the directors of the NRA, four headquarters departments, and the commanders of the Ground Force, Navy, Air Force, and Strategic Rocket Force. This Commission has the final say on all decisions relating to the NRA, including senior appointments, troop deployments and arms spending.

0225. NRA officers are also party members and there is a separate party machine inside the military to make sure rank and file stay in line with party thinking. The

Military Affairs Commission also controls the paramilitary National Police, which has the politically sensitive role of guarding key government buildings.

The Discipline Inspection Commission

0226. Party members suspected of corruption, bad management or breaking with the party line are liable to be brought before the Discipline Inspection Commission, set up to deal with internal party discipline and to monitor abuses. Indeed, as economic reforms have gathered pace, corruption has become probably the single most damaging issue for the party's standing.

The Courts

0227. Unlike in democratic countries, the Checkian court system is in no sense independent. Both main legal organs answer to the National Congress. The Supreme Procuratorate is the highest legal supervisory body, charged with safeguarding the constitution, laws and people's rights. The Supreme Court sits at the top of a pyramid of courts going down to the local level. Public security organs are in- charge of the investigation, detention and preparatory examination of criminal cases.

Military

0228. DROC National Republican Army's Mandates:

- a. To consolidate the ruling status of the highest Party
- b. To ensure DROC's sovereignty, territorial integrity, and domestic security to continue national development
- c. To safeguard DROC's national interests
- d. To help maintain regional peace

0229. The National Republican Army (NRA) is the armed forces of the Democratic Republic of Checkia (DROC) and its founding and ruling political party, the Party of DROC (PDROC). The NRA consists of four professional service branches: The Ground Force, Navy, Air Force, and Strategic Rocket Force. Units around the country are assigned to one of five mission commands by geographical location. The NRA is the largest military force in the South East Asian region, almost at par with other large Asian countries, and at the same time constitutes the sixth largest defense budget in Asia. It is one of the fastest modernizing military in the world today and has been termed as with significant defense and rising regional power projection capabilities. DROC has also entered the world of arms trading through selling of high quality small weapons.

0230. The NRA is under the command of the Military Commission (MC) of the PDROC. It is legally obliged to follow the principle of civilian control of the military, although in practical terms this principle has been implemented in such a way as to ensure the NRA is under the absolute control of the Communist Party. Its commander

in chief is the Chairman of the Military Commission (usually the General Secretary of the Communist Party of DROC). Since the 1980's, DROC has used different military strategies, which the NRA calls "strategic guidelines". The most important came in 2010 and 2018. In times of national emergency, the National Police and the National Militia act as a reserve and support element for the NRA Ground Force (NRAGF).

0231. Technically, military service with the NRA is obligatory for all Checkian citizens. In practice, mandatory military service has not been implemented since year 2000 as the National Republican Army has been able to recruit sufficient numbers voluntarily. All 18-year-old males have to register themselves with the government authorities, in a way similar to most nations. In practice, registering does not mean that the person doing so must join the National Republican Army.

Economic

0232. The market economy of Checkia is Asia's tenth largest economy by nominal GDP and the 10th economy by purchasing power parity. Until 2019, DROC is one of the world's fastest-growing major economy, with growth rates averaging 4% over 20 years. Due to historical and political facts of DROC's developing economy, Checkia's public sector accounts for a bigger share of the national economy than the burgeoning private sector. According to the IMF, on a per capita income basis DROC ranked 50th by GDP (nominal) and 63rd by GDP (PPP) per capita in 2018. The country has an estimated \$1 trillion worth of natural resources, 40% of which are coal and rare earth metals. DROC has the total banking sector assets of \$1 trillion with \$400 billion in total deposits.

0233. DROC is also involved in trading, manufacturing/processing economy and exporter of goods. It is also one of the fastest-growing consumer market and importer of goods. DROC is a net importer of services products. Checkia has increasingly engaged in trade organizations and treaties in recent years. The country became a member of the World Trade Organization in 2010. It also has free trade agreements with several nations, including ASEAN, Australia, New Zealand, Pakistan, South Korea, China and Switzerland. The provinces in the country's coastal regions tend to be more industrialized than its regions in the hinterland. As DROC's economic importance has grown, so has attention to the structure and health of the economy.

0234. To avoid the long-term socioeconomic cost of environmental pollution in Checkia, it has been suggested that their economy be shifted to more advanced industrial development with low carbon dioxide emissions and better allocation of national resources to innovation for sustainable economic growth in order to reduce the impact heavy industry. DROC aims of becoming a "moderately well-off society" by 2030.

Socio-Cultural

0235. Checkia's rich patriotic history results into a nation that has more solid ambition to dominate over other regions. This ideology had its root to the early civilization created by predecessors.

Marriage and Family

0236. The Checkian people put a tremendous emphasis on lineage and family ties. Some families can trace their genealogy back over centuries. For men, carrying on the family name by having sons is a major goal. Many men, especially firstborn sons remain at home with their parents in order to care for them in old age. Even married couples often live with parents. Once a woman is married, she is expected to join her husband's family and often moves under the same roof as her in-laws.

Gender Relations

0237. The issue of gender roles and equality has been contentious in Checkia. Traditional beliefs have always placed men ahead of women in the social hierarchy. However, some women have made great strides in other areas particularly in working and taking on greater roles in professional and public life. They are able to inherit property.

Behavior, Etiquette and Values

0238. Checkian culture has traditionally prized the worth of the group over the worth of any one individual; this was carried over during the rise of Communism. For its people, failure to do one's duty is dishonorable, not only to the individual but to the entire family. Deference and obedience to one's elders are of the utmost importance, as are ideas of hospitality and social ties. Several generations might live in close quarters and have contact with one another daily, and neighbors visit and interact on a regular basis.

Education

0239. The educational system in Checkia is inclined to progressive thinking and independence on academics. The modern practice is to: 1) respect teachers; 2) dedicate time for learning; 3) use new means of acquiring advanced knowledge, educational content, and science and technology; and 4) adjust to attain teaching professionalism based on market demands.

Economics and Social Class

0240. The traditions of the dominant outlook encourage social stratification. Under Communism, government workers and businessmen prosper at the expense of rural agricultural laborers. For this emerging economy, people covet status symbols such as luxury cars and designer clothing to demonstrate their success, particularly in urban areas. In rural areas, such as those populated by the minority, traditional tribal social customs still reign, with people dressing much as they have for millennia. Education is mandatory and prized both by the culture and by the state; the Government, raised the literacy rate from 15 percent to over 75 percent.

Information Technology

0241. New industrial technology revolution has turned information industry into supporting industry of almost every nation, as well as penetrated information technology widely into every aspect of national economy and social life. The diffusing of information technology is a gradual process, which experienced the development process from passive to active, spontaneity to consciousness, part to whole.

0242. After 1995, DROC put forward the strategy of driving the development of industry by informatization during the period of the "Ten-Year Plan", and established strategy program for the development of national informatization. It also brought forward "putting national economic and social informatization to the priority position", "enhanced promoting national economic and social informatization is the strategy measure covered the whole modernization process". Under the promotion of government, information technology is widely applied in every aspect of national economy and social life, Checkia's informatization has achieved new developments.

Information technology in Government

0243. From central to local government was all regard Government Online as a very important project since 2005, E-governing project is continuously improving. The rapid development of information technology is promoting E-governing changing from traditional system to virtual E-governing. Government-Online Project has greatly boosted the efficiency and enhanced the transparency of government work and has provided strong technological and consulting support for improving information management and service of government.

Information technology in Banking

0244. After several years of hard work, banking as a crucial part of government promoting informatization, has gained great achievement: National commercial banks, postal saving banks, part of cities' commercial banks, and country credit societies have bank cards business and establish bank card information centers in cities nationwide basically realized cross-bank use of bank card and sharing of infrastructures in local cities. Commercial banks made full use of network resources, established telephone banks, network banks, enterprise banks, self-help banks, client bank centers, basically realized online financial business.

Information technology in Transportation

0245. Application level of electronic information technology in our transportation systems of railway, highway, aviation, and shipping increase continuously. The scale of information system booking disposition of DROC Civil Aviation has list top 10 in Asia, distributing network covers all around the world that has produced sound economic and social benefit. The complicated and huge railway ticket-selling system has put into full-scale application, electronic information technology has become the key tool to boost railway management efficiency. Main ports and ocean transportation companies have widely used the adopted electronic interchange system, realized main business paperless handling.

Information technology in Education

0246. On the basis of technology, the modern education network platform has been formed. Basically, connected to many cities and different universities connected to most users. DROC's internet has become a large public internet at par with other Asia's top countries. 90% universities have built up different levels and scales campus networks. Until 2005, primary and middle school students have received information technology education, most people have their own PC and a large number of high schools have set up campus networks. DROC Education Research NET, DROC Science and Technology NET have had the ability to provide the network which covers most of the universities, research institutes, academic institutes and part of primitive and high school.

Information technology in Military

0247. Checkia has intensified its research for its defense-related activities and improvement of electronic warfare (EW) equipment. Through the procurement of foreign systems that concern EW, Checkia has greatly enhanced its intercept, direction finding, and jamming capabilities. This advancement is translated into the unmanned aerial vehicles' capacity to provide extended imagery reconnaissance/surveillance and electronic intelligence.

0248. NRA recognizes the importance of information and communication in the creation and destruction of a nation's command and control. In this regard, the 'Information Safeguards Base', which operates under the "Integrated Electronic Warfare" (IEW) document, guides the NRA computer network operations. In the event of conflict, it calls for the combination of network warfare and EW tools. The IEW can jam sensor networks, information distribution networks, and command and control of the enemy.

0249. As Cyber terrorism, cyber attacks, and cyber crimes increasingly and fiercely affect security, not only severely damaging public and private strategic Information and Communication Technology (ICT) infrastructure, but also causing massive loss of lives and properties mostly of innocent people, the NRA has also established Cyber units to counter such.

0250. Cyber warfare and cyber defense are not new dimensions in the DROC Defense concept. As the defense organization, like the rest of the Checkian society, becomes more networked with ICT being its backbone of operations, attacks against its cyber infrastructure become more critical. The cyber domain is likewise expected to be utilized by unscrupulous individuals and groups to undermine the overall security of the country. Checkian Cyber units' online presence will be equivalent to their physical presence in the future. They use can use the cyberspace for more propaganda and the spread of misinformation to shape public opinion, and more importantly, prod action.

0251. With the advancement in technology, increase computer network attack, computer network exploitation, electronic attack, and electronic exploitation will take a toll on DROC adversaries' critical ICT infrastructures as DROC is investing heavily

in cyber warfare thus increasing the danger posed by state-sponsored cyber terrorists or actual state actors. DROC strongly believes that Cyberspace is the most recent frontier in warfare as it gives a new face to security threats and makes war borderless.

Infrastructure

0252. DROC continues to invest on transportation, automobiles, and infrastructure to promote domestic growth. Infrastructure development in DROC has rapidly upgraded within the last five years. Infrastructure investment has been the engine driving the economic growth of DROC.

0253. The economic structure has transformed into a socialist market-oriented economy since 1980, which has been consolidated in the early 1990s. Trading-orientated economy supported by infrastructure development contributes largely to the economic growth.

Current Statuses of Infrastructure Development In DROC

0254. **Roads.** Road length has increased in DROC from 2010 to present date. The layout of road network has further improved. The technical grades and road surface grades have been both upgraded. Highway construction has broken through the historical records. Road length in the counties and towns have continuously and rapidly increased. The road density has also increased, and the accessibility by roads has been improved. Passenger transport and freights through roads are up 25 percent, of the number of passengers transported by all the transport tools.

0255. **Railways.** By the end of 2015, the length of running railways has also improved. It included double tracked rail and electrified rail of 15 percent and 20 percent up, respectively. Passengers by rail in 2015 reached 3 million, which grew 10 percent from the previous year. Freight and turnover both grew 15 percent.

0256. **Airline.** The civil airline of DROC became the 20th large air transportation system in the region, in 2010, based on data on the total turnover of regular airlines by the International Civil Airline Organization of the Member States.

0257. **Waterway.** The transportation capacity of waterways increased from 10 million tons in 2010 to 11 million tons in 2015, 2 percent up. The average transportation capacity per ship rose from 50 tons to 60 tons. The freight capacity by sea rose to the 30th place, while finished freight by sea accounted for 3 percent of the 87 world's total.

0258. **Electricity.** The electricity power industry has developed at a rapid speed with the increase in the electricity generation capacity. DROC has established six large-scale stable regional electricity networks and formed a preliminary national connected network. The three corridors for electricity transmission from the west to the east have also been formed in eastern DROC, in central DROC, and in western DROC respectively.

0259. **Oil and Gas Pipes.** The piping capacity of oil and gas was estimated 30 percent in 2015 more than the 2010 level. The flagship project to pipe gas became operational

in 2000, which opened the main energy artery from the western DROC to the eastern DROC. It is also the symbol of the technological improvement in the field of natural gas pipe construction in DROC.

0260. **Communication.** Checkia's telecommunications sector is growing at a remarkable rate. Facilities and services are constantly being expanded to accommodate the country's growing market. Communication towers are installed strategically in the country for maximum service.

0261. The Ministry of Telecommunications and Information Technology oversees all modern communications technologies in the country.

0262. The country's landline telephone system is modern and efficient, using extensive microwave radio relay, coaxial cable, and fiber-optic cable systems. In 2019, one million lines were available, and DROC Telecom is expanding its network to 2 million lines. 40 standard earth stations link up with the DROC Satellite System.

0263. Mobile phones are extremely popular in DROC. In 2005, there were more than one million mobile phones in use in the country. DROC's mobile telephones operate on one of the leading digital cellular systems used all over the world.

0264. Internet usage is growing rapidly in DROC. More and more lines are being provisioned for Internet access to accommodate increasing demand, including high-speed service such as DSL. According to a 2003 poll survey, nearly three-fourths of DROC have Internet access based on land area covered.

International Defense and Security Engagement

Managing Regional Disputes

0265. Checkia seeks to secure its objectives without jeopardizing the regional stability that remains critical to the economic development that has helped it maintain to gain power. However, Checkia's leaders employ tactics short of armed conflict to pursue its strategic objectives through activities calculated to fall below the threshold of provoking armed conflict with other countries. These tactics are particularly evident in Checkia's pursuit of its territorial and maritime claims in the South China Sea. Checkia is also willing to employ coercive measures- both military and non-military- to advance its interest and mitigate opposition from other South East Asian countries.

Military Cooperation

0266. Checkia conducts bilateral and multilateral exercises including deployment of military personnel to other countries, although primarily with China, through visits and exchanges for international exposure. These advance foreign relationships gained military assistance programs and the development of personal relationships. Expanded NRA travel abroad enables NRA officers to observe and study foreign military command structures, unit formations, and operational training and shape approaches to shared security concerns.

Peacekeeping Operations

0267. Checkia's participation in the UN Peacekeeping Operations supports its objectives by highlighting Checkia's role as a key actor and obtaining operational experience for the NRA. It continues to contribute number of forces among the permanent members of the UN Security Council.

Military Attaché Presence

0268. Checkia manages its day-to-day overseas military diplomacy work using NRA officers assigned as military attachés in offices worldwide. This reflects Checkia's increased interests in global stage. Its military attachés also conduct clandestine and overt intelligence collection on their countries and areas of assignment. Although the general function of an attaché office is the same worldwide, some prioritize specific missions or diplomatic priorities due to close bilateral relations or other factors.

Counterpiracy Efforts

0269. Checkia continues to conduct counterpiracy operations in different areas with its naval escort task forces primarily to assist sailors on Checkian merchant ships. The task groups conduct port calls and hold bilateral engagements with host country militaries and local communities, providing another platform for NRA military diplomacy.

Chapter III

Military Capability

Composition

0301. The whole NRA has an estimated total of one hundred thousand men in active service. DROC’s Armed Forces includes 20 combined corps called Army Group. They are deployed in 5 Mission Commands: MC1, MC2, MC3, MC4 and, MC5. The Navy is distributed among MC1, MC2, MC3, and MC4. The Air Force deploys an air command in each of the five Mission Commands. The NRA ground force composes the main group of each Mission Commands.

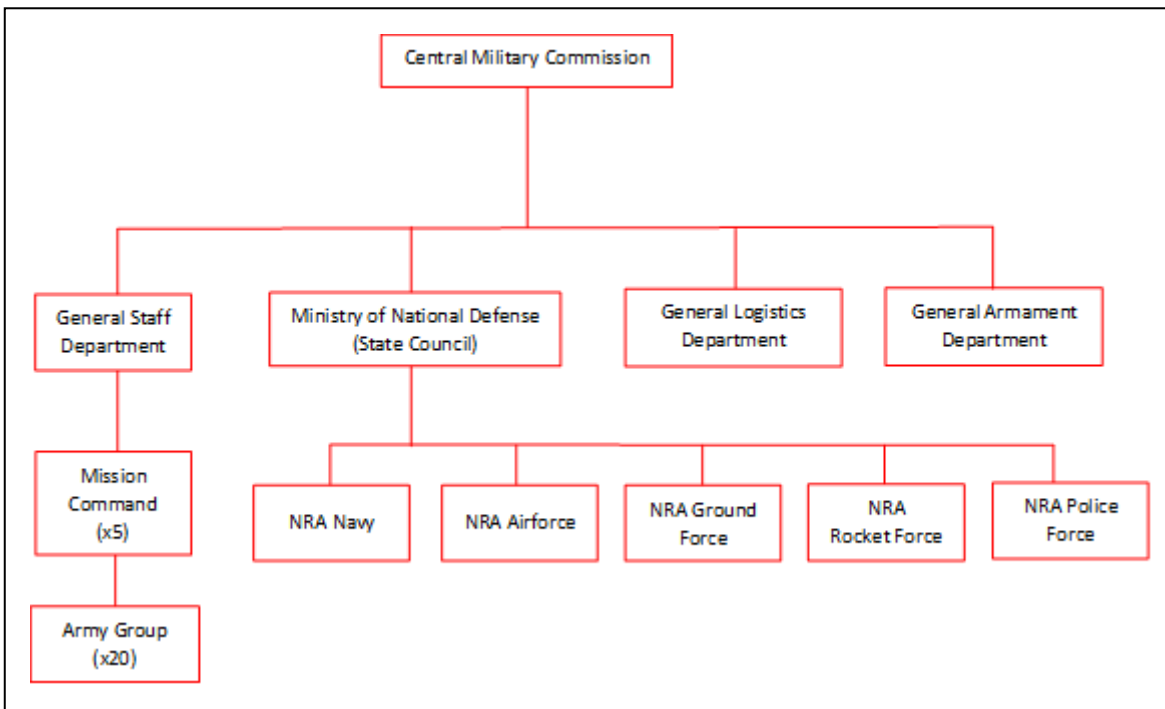


Figure 3.1 – Summary of DROC's ambitious military organization

0302. The NRA is basically being managed by the enemy’s Central Military Commission (CMC). NRA’s major services are under its national defense providing forces to the different Mission Commands. The Mission Commands are the essential operational commands of the NRA. These enemy commands employ and deploy units according to mission given by the CMC. However, plans and orders emanate from the General Staff Department as dictated by the CMC.

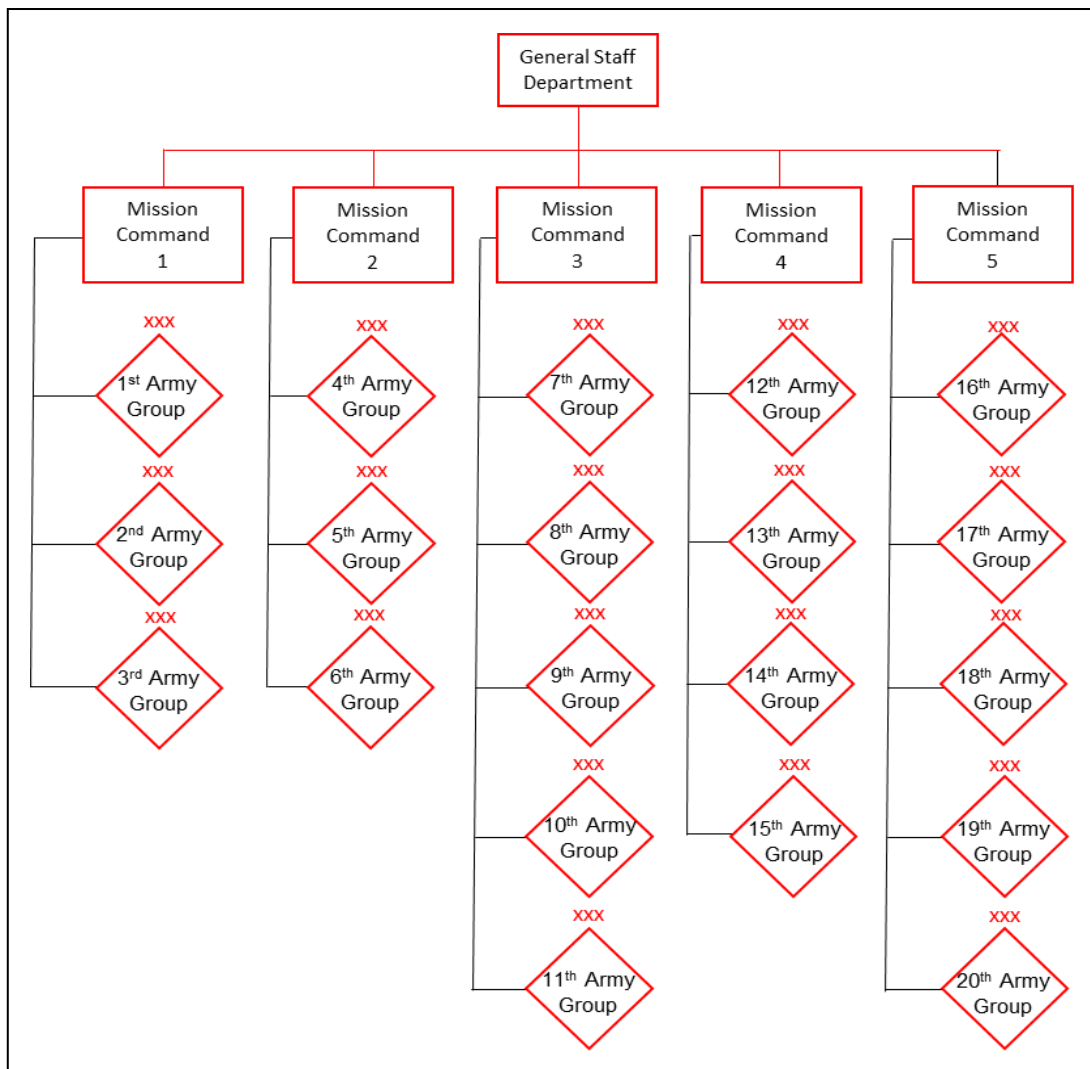


Figure 3.2 - As shown above is the composition of NRA’s Mission Commands composed of different Army Groups

0303. Checkia’s NRA relies on its Mission Commands in employing its military power. The composition of Mission Commands and its Army Groups varies in their mission. A Mission Command maybe augmented or reduced with Army Group/s depending on the dictate of CMC.

0304. Army Groups maybe likewise modified “modular structures” depending on the types of mission given. Basically, an Army Group can operate on its own, and is well organized and supported by the Mission Command. An Army Group is capable of launching offense on relatively small armed forces particularly in South East Asia.

Disposition

Geographical Location

0305. Currently, DROC has five Mission Commands (MCs). The MCs are set up according to the states' administrative divisions, geographical locations, strategic and operational orientations, and operational tasks. The closest military command in the

Philippines is the MC1. It is responsible for the eastern portion of Checkia, together with the East Naval Fleet of the NRA Navy.

0306. Each of the five Mission Commands has an administrative headquarters responsible for the ground, naval, and air forces located in their corresponding provinces. The military command headquarters serves as the headquarters for the ground forces within its area of responsibility, whereas navy and air forces have their own regional headquarters under the leadership of the military command headquarters.

Tactical Deployment

0307. **NRA Ground Force.** The Ground Force is the backbone of NRA. The main combat power of the NRA ground forces lies in the 20 Army Groups comprised of combined arms units with gross manpower ranging from 45,000 to 60,000 personnel or probably higher. The composition of Group Armies varies according to their location, mission, and readiness level, but generally include two to five combat divisions or brigades as well as a number of combat support and combat service support units.

0308. **NRA Navy.** The South Naval Fleet has two marine brigades, totaling an estimate of 10,000 men. There are 3 main naval bases. The NRA Navy has now completed the construction of a major naval base in the country. The base is large enough to accommodate a mix of nuclear-powered attack and ballistic-missile submarines and advanced surface combatants, possibly for an aircraft carrier. Submarine tunnel facilities at the base could also enable deployments with reduced risk of detection.

0309. **NRA Air Force.** The NRAAF maintains an air force headquarters at a command level below the MC. Operational command over the NRAAF, however, is dispersed among MC air force commands. The MC headquarters retains control over combined operations while the MC air force commander is responsible for flight operations within the MC.

0310. **Rocket Force.** Currently the RF has six operational missile bases. Four of these bases are "Army Level" units, while the other two are "Sub-Army Level" units, which are half grade lower in NRA's hierarchy.

Strength

0311. The whole NRA and its reserve have an estimated total of 200 thousand men. The Army is said to have 45,000 to 60,000 active personnel while the Navy is composed of about 30,000 sailors distributed among the fleets. Meanwhile, the air force is reckoned to have a total of 20,000 troops whereas the Rocket Force nearly numbers to 1,000. The reserve force, on the other hand, is approximately at 100,000.

0312. The number of personnel per regiment or battalion depends on the unit type and specific equipment assigned to them.

Doctrine

0313. The fundamental Checkian military doctrine is that victory can be won only by attacking. This doctrine applies at all levels.

0314. There are three basic factors affecting the development of Enemy tactical doctrine: The first is a long tradition of guerilla warfare coupled with a natural tendency to follow principles well tested; the second is the need to give greater emphasis to the study of conventional tactics to ensure that the best use is made of the characteristics of the modern equipment being phased into the Army; finally, the overwhelming subordination of the military arm to the political staff which is stressed in all Asian communist doctrine which is being likewise practiced by the Checkian, Chinese and Vietnamese communist units. A result of this is the committing of inferior forces to a certain defeat with casualties – against military doctrine – if the political or propaganda long or short-term effects seem desirable.

0315. The operational art of the NRA at present is firmly rooted in the concepts and doctrine of modular forces creating independent battle groups within the division. Further, augmenting the battle groups seamlessly with heavier forces.

0316. Battle groups are generally based around a battalion and the NRA is going towards a three-level command structure of corps, brigade and battalion as the sub-units of an Army Group. The divisional structure remains for administration in many Checkian military regions containing brigades instead of regiments to accommodate the battle group concept. The idea behind brigade and battle groups is to ‘adapt to informationalised warfare and to enable more rapid decision making on the battlefield’.

0317. In the NRA, the primary difference between a regiment and a brigade is that the brigade is capable of independent operations whereas a regiment is directly subordinate to the division, as it does not have the headquarters staff to carry out independent operations.

0318. Though the enemy have evolved largely into a modular force, its doctrine remains to adopt the division-regiment concept. The following sections deal with the tactical employment of the regular forces on a more or less “orthodox/doctrinal pattern”. The factors which will affect the more or less qualification will be the theatre of operations, the scale of the war, the nature of the hostile forces and the domestic situation at the time of the war.

The Advance

0319. In Checkian military doctrine, the advance from rear concentration areas is the foundation of future combat movements and must fulfill certain requirements. These requirements – concealment and speed in execution, organization of the force for battle and surprise – are the most important guarantees for military victory.

0320. In planning the advance, the commander will consider the following factors:

- a. Mission.

- b. Hostile forces, including disposition, mobility, strength, composition, and locations of reinforcements, and where and how contact may be expected.
- c. Ground, including topographical features that may assist either his advancing forces or the friendly forces.
- d. Extent and location of lines of communications and important communications centers, including condition of roads and the possibility of cross-country movement in the area of the advance.
- e. Weather and its possible effects on movement.
- f. Attitude of the inhabitants of the areas through which the advance will be conducted.
- g. Requirements for security.
- h. Time and space.
- i. Extent of fortification in the line of advance.
- j. Troop efficiency, combat capability and morale.
- k. Logistic means available to support the force.

0321. Enemy doctrine warns that the faulty disposition of forces in the advance will inevitably result in a loss of initiative after contact has been made; permit an alert opponent to make effective use of reserves; and possibly result in defeat in detail of the main force.

Advance of a Large Force

0322. For security, during movement, an Enemy force deploys air and ground reconnaissance elements, which operate in front and on the flanks of the force and its advance, flank and rear guards as required. Ground reconnaissance elements in the covering troop role may operate up to 150 miles ahead of the forward elements of the advance guard. These deep reconnaissance elements may operate as conventional regular troops. Alternatively, they may carry out their tasks disguised as local inhabitants. In either case, the maximum use would be made of sources of intelligence such as insurgents and local sympathizers. The advance is not likely to be continued unless information from prior reconnaissance is adequate, as the Enemy commander, with limited mobility, is wary of losing security by being enveloped.

0323. The formation adopted by the commander for the advance is dependent upon his appreciation of the various factors listed.

0324. The number of columns in the advance is determined largely by the number of usable roads in the area and the suitability of the ground for cross-country movement. When possible, the advance is on a broad front, using four or five routes. By this case

the Enemy will sacrifice depth to gain a broad front but will employ a strong mobile Reserve to achieve his depth across his front. If limited to one main route, and if this route should be subject to nuclear or air attack, making it difficult to keep open, the commander can be expected to use to the full his capability of moving large forces cross-country, especially by night.

0325. When no contact with the enemy is anticipated, the Enemy commander may allow formations to move by types, at their own speed, provided they complete the move in the planned time.

0326. When the advance takes place through an area in which friendly forces are likely to be encountered, the commander adopts a formation that ensures the readiness for battle of his force. In this case, emphasis would be placed upon the following points:

- a. **Organization of the Force into Columns Capable of Independent Action.** In determining his grouping, the commander considers firstly the deployment of infantry in the advance columns and then allocates supporting reconnaissance, artillery, armored, chemical and engineer elements as required. Reserves are retained under the commander's control.
- b. **Ground.** In close country, the commander plans for the aggressive, coordinated employment of small groups heavily supported by artillery and engineers and backed by strong reserves; air support will be a secondary consideration. In open country, where large forces can maneuver, the commander plans for a strong mobile striking force, supported by sufficient tactical air power to gain and maintain local air superiority.
- c. **Designation of Bounds and Boundaries to Suit the Ground and the General Scheme of Deployment.** Normally, columns on the main axis move on a rather narrow front while columns on secondary axes are allotted broader frontages.
- d. **Security.** The commander will ensure that every effort is made to prevent the composition and intentions of his force being determined by the enemy.

0327. The distance between major columns is determined by the effective range of available weapons, ground (including available routes) and the enemy situation. When there is a possibility of meeting the friendly forces, and their dispositions are known, the distance between independent columns is decreased and an advance on a broad front is adopted. Enemy doctrine teaches that this action increases the battle preparedness of each formation and unit. The deficiency in tactical depth is offset by the retention of strong reserves.

0328. The advance guard or security detachment may include as much as one-third of the infantry or mechanized infantry component of the force, half of its artillery plus armored and engineer detachments as required. An advance guard of a large force is divided into:

- a. The point
- b. The vanguard (which may be one-third of the infantry or mechanized infantry

component of the advance guard, plus supporting arms).

- c. The main guard.

0329. The vanguard dispatches the point (advance and flank points); the point in turn dispatches forward and flank reconnaissance elements.

0330. Flank guards are either mobile elements (when there are parallel roads, or the ground permits wheeled movement) or fixed detachments. The latter may be deployed at the beginning or during the advance. When possible, the flank guard moves along parallel routes up to about six miles from the main body.

Advance of a Division

0331. In the advance the division is divided into two echelons – the advance guard and the main body. The relative size and the composition of the two echelons will vary but the following may be used as a general rule:

- a. When a division moves in column, a force of all arms based on an infantry regiment acts as the advance guard.
- b. When a division moves in parallel columns, each leading regiment is responsible for its own security. In such a situation, the division advance guard is in effect, a reinforced infantry battalion along each route.

0332. Advance guard, during daylight marches, normally consist of infantry units supported by tanks, artillery, engineers and other arms and services as required. During night marches advance guards usually consist of infantry only; supporting arms move with the main body.

0333. The advance guard consists of the following elements:

- a. **The Point.** The strength of the point may be up to a reinforced company. Patrols are sent out from the point to observe to the front and flanks. They may be up to a section in size. The point is supported by light mortars (60mm) and recoil-less weapons.
- b. **The Vanguard.** The strength of the vanguard may be up to a reinforced battalion. It provides the point and organizes flank patrols. It reinforces the point when contact is made with an opposing force. It is supported by heavy weapons, mortars, tanks and in some cases artillery.
- c. **The Main Guard.** The main guard may be composed of up to a **reinforced** regiment, less the battalion, which is acting as the vanguard. It is equipped with mortars, field artillery, tanks and assault guns.

0334. The strength of the advance guard reflects Enemy teaching that a commander should be capable of employing this section of his force as a strong attack echelon.

0335. The roles of the advance guard may be summarized as:

- a. Protecting the main body against surprise attack.
- b. Clearing opposition within its capacity.
- c. Affording the main body time and space to deploy.
- d. Obtaining, by fighting if necessary, information of hostile strengths, organization and dispositions.
- e. Repairing roads to permit unobstructed movement of the main body.

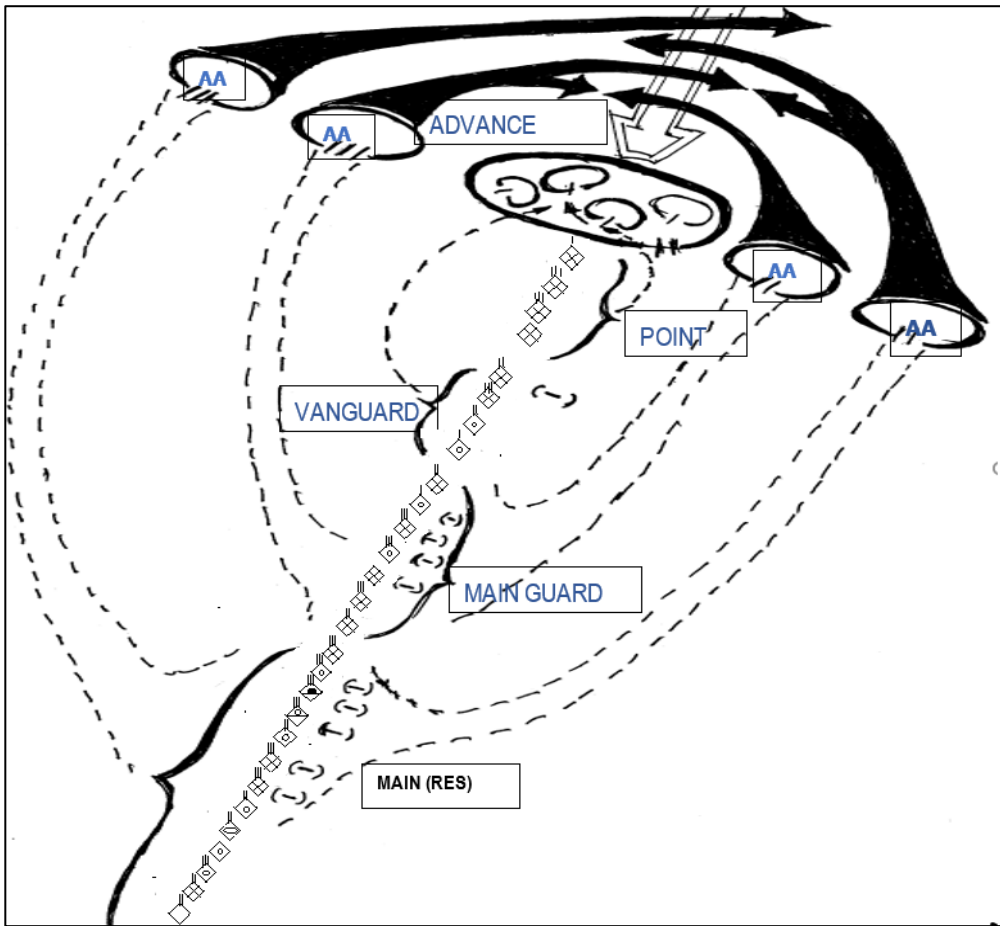


Figure 3.3 – Shown above is the enemy's template of advance and encounter battle

Actions on Contact

0336. On contact with the enemy a minimum of the leading elements of the advance guard engages their leading security detachments and attempts to destroy or contain them. The remainder of the advance guard is committed in an attack on one or both of the enemy's flanks. The advance guard, being deployed on a wide front, is able to find the best avenues of approach with minimum loss of time. It is often committed piecemeal, units being allotted tasks and launched into action, as they become available. These rapid, piecemeal attacks are part of the Enemy's reconnaissance effort to define the opposing FEBA, locate weapon and gun positions and tasks. As information builds

up through probing attacks and infiltration the enemy commander will deploy his main body to destroy the objective, which will normally be a position or installation in great depth rather than close to the FEBA.

0337. Rapid and bold offensive is considered the key to success in these circumstances, even against a stronger enemy, and envelopment is considered to be the best method of isolating and annihilating portions of the hostile column. The division commander, having allotted his subordinate commanders their tasks, places greater reliance on their initiative and judgment in the encounter battle – and in the pursuit that may follow a quick success – than in the more deliberate phases of war.

Artillery in Advance

0338. In the advance the role of artillery is to deliver concentrated fire to pin down friendly forces as soon as they come within range and to counter, flank attacks by these forces.

0339. To speed up the deployment of artillery and to exploit the maximum range of the guns, artillery units are located well forward in the advance. Artillery with the advance guard deploys as soon as contact is made and prior to the deployment of the main guard. Enemy doctrine stresses that artillery should be in firing positions ready to support infantry and armor as the latter commence their attacks. Artillery with the main body reinforces the artillery with the advance guard initially and then supports the attacking units of the main body.

Armor in Advance

0340. The proposed role of armor, based upon the terrain, determines its positions in the advance. Tanks are normally allocated to the advance guard and have the task of supporting the infantry in their operations against hostile mobile troops and screens. Normally, the commander does not commit his tanks until the hostile tank strength is reduced by artillery and infantry anti - tanks. Tanks are then used to destroy the remaining hostile tanks and strong points and to pursue the withdrawing forces.

The Attack

0341. A fundamental tenet in Enemy tactical doctrine is that the purpose of offensive operations is to destroy the opposing forces rather than to capture or retain ground. This doctrine applies at all levels.

0342. Moreover, they believe that victory can be achieved only by striking in selected areas with overwhelming numerical superiority. A ratio of 3:1 is considered the minimum but much higher ratios (even 10:1) are preferred. The ratio varies with the strength of the hostile position especially in artillery. The concentration is required only in the area of the proposed assault and the enemy is quite prepared to weaken their position in other sectors to achieve it.

0343. Long experience of guerilla warfare has made the enemy masters of the art of infiltration. Teaching emphasizes the importance of infiltrating substantial forces to their opponent's flanks and rear before an assault. These forces establish themselves

astride their opponent's supply routes to prevent reinforcement of withdrawal of the defending force and to prevent employment of reserves.

0344. The enemy emphasizes depth in the attack and organizes their forces into echelons to achieve this. They are quick to take advantage of a penetration of opponent's forward defenses and to develop it by seizing objectives behind his main position. At army level, initial objectives might be 6 to 10 miles deep while final objectives might extend 20 miles behind the opposing FEBA. On occasions this depth of penetration has been achieved in a single night.

0345. Enemy doctrine stresses their importance of night operations. They are expert in both combat and administrative operations under cover of darkness. During training, emphasis is placed on stealth, flanking movements, encirclement, close combat and the employment of various ruses to enter hostile positions.

0346. The enemy believes that an intense reconnaissance effort will usually discover a weak point in any defense system. They teach that all friendly forces pay much more attention to their front than to their flanks and rear. Therefore, an assault against flank or rear will pay greater dividends, not only because of the weaker defenses but also from the advantages that come with surprise. The enemy will rarely mount a one-pronged attack and even if the attack on the flank or rear is not the main thrust, it will still be as strong as their forces in the area permit.

0347. The Enemy employs two distinct method of assault:

- a. Envelopment.
- b. Frontal assault.

0348. **Envelopment.** This maneuver can take either of the following forms:

- a. **Double Envelopment.** Elements of the enemy attacking formation engage the friendly forces in the main defensive position to neutralize their small arms and automatic weapons fire and to force them to disclose their mortar and artillery. The remainder of the assaulting force, often as much as 80 percent of it divide and simultaneously attacks around both flanks to cut off the supply routes, thereby preventing reinforcement except by air. The encircled position is then destroyed.
- b. **Single Envelopment.** The main assault is on one flank only; otherwise the aim and the method of execution are the same as for double envelopment.

0349. **Frontal Assault.** "Human Wave" tactics are usually employed in this method of attack, which is normally used only when the Enemy reconnaissance effort has failed to locate a weak point or gap in the opposing defenses. The assault is launched on a narrow front with the aim of breaking through the forward defenses and the permitting successive waves to pass through and fan out within and behind the position.

0350. A frontal attack combined with an encircling movement is called the "Penetration-envelopment" maneuvers.

The Encounter Battle

0351. In this form of attack, the Enemy believes seizure of the initiative to be paramount and the requirement for thorough reconnaissance and detailed planning to be overshadowed by the need for quick and decisive action to achieve success in an obscure and rapidly changing situation. Before contact reconnaissance is intense; after contact is made all effort goes into seizing the initiative and throwing the opposing forces off balance.

The Quick Attack

0352. The Enemy considers that an opponent occupying a hastily prepared defensive position will not have a fully coordinated defense plan, his fire support will be relatively poor and his hastily constructed defensive works can be breached with comparative ease. They, therefore, emphasize speed in the planning, preparation and execution of the attack to take the maximum advantage of the opportunities offered and to prevent the friendly forces from becoming more firmly entrenched and prepared. However, the preparation and conduct of the quick attack follows the procedures of the deliberate attack rather than the practice of delegating authority and initiative to subordinate commanders as in the encounter battle and the pursuit.

0353. Quick attacks are characterized by speed and determination consistent with an adequately coordinated fire plan. The “one-point two –sides” tactical technique (a main attack with simultaneous diversionary attacks) is normally used.

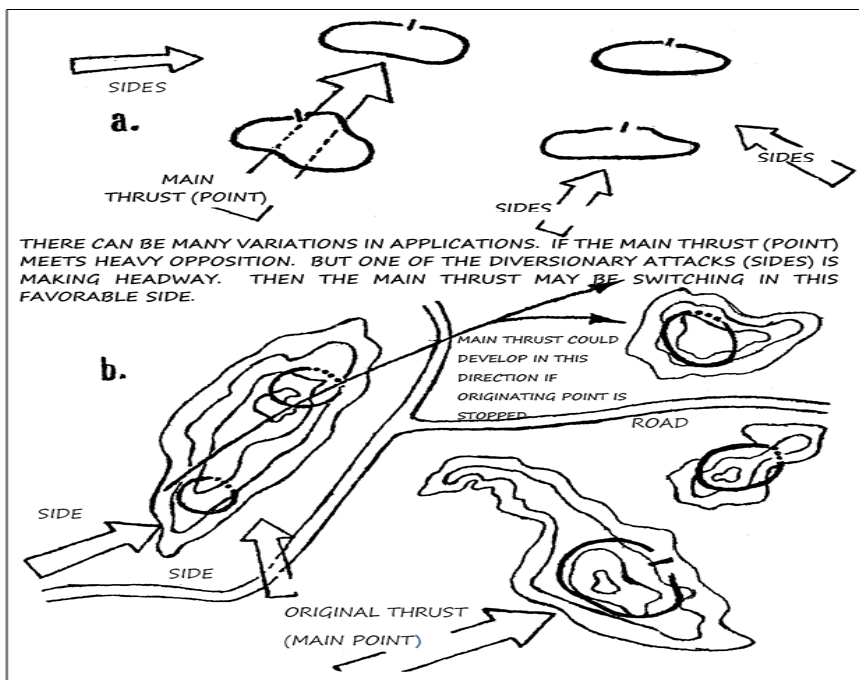


Figure 3.4 – Above are the variations of “one-point two –sides” tactical technique

Deliberate Attack

0354. In a deliberate attack against a well-organized defensive position one or more regiments, or even a division, may be employed against a hostile battalion area. A battalion is often launched against platoon. Regiments or divisions generally employ, where possible, an envelopment or turning movement combined, if necessary, with a frontal penetration. At lower levels, envelopment on a small scale or the “one-point two-sides” technique is used. As the attack progresses, the division commander used his reserve or uncommitted support echelon to repulse counter attacks and to strengthen gains won by his assault echelon. Battalion and sub-unit commanders in the attack echelon do not normally hold a reserve.

0355. The infantry division commander may use the penetration envelopment maneuver:

- a. When the division is in advance has driven an opposing security element and has finally come up against the main defensive position, or
- b. When the division in an area defense switches to an offensive role by mounting a general counter offensive or launching an attack on a previously inactive front.

0356. The pattern of the attack is shown in the figure below.

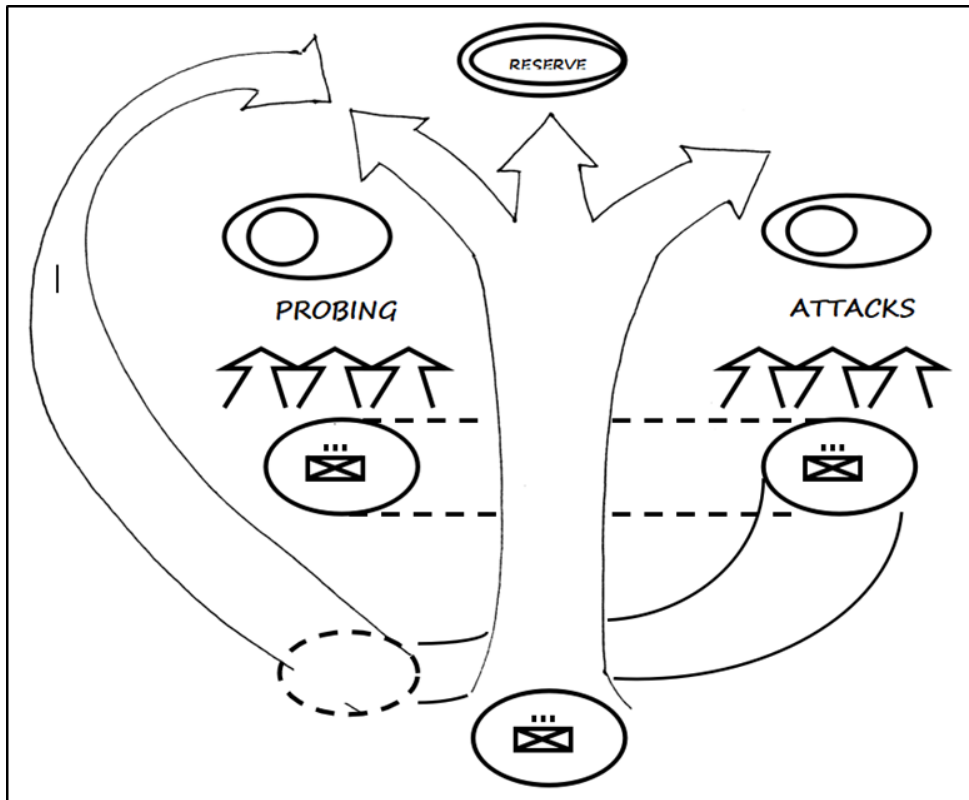


Figure 3.5 – The enemy’s penetration-envelopment maneuver

0357. Responsible for the divisional front is taken over by one of the regiments in contact with the opposing forces, while the other regiments withdraw to an assembly area to prepare to make a flank attack. During the period of reorganization and

preparation for the attack (one or two days), the regiments remaining in contact continually probes and makes limited attacks to keep the opponents off balance and to hide the activities of the rest of the division. When the divisional attack is launched, one regiments makes a flank attack while the other attempts to fix the attention of the opposing commander. Meanwhile, the third regiments, previously out of contact, moves on a narrow front through the regiment executing the probing attacks and attacks a weak point (usually an inter-unit boundary). The mission of these regiments is to breach the forward defenses, press on to engage the enemy reserve and deploy subordinate elements to each side of the main attack. The aim of the subordinate units fanning out to the sides is to link up with the flanking regiments, thus isolating a major portion of the hostile force, or to prevent the withdrawal or reinforcement of such forces remaining in contact.

Preparation for the attack

0358. **Reconnaissance.** The most painstaking and detailed reconnaissance is normal before a deliberate attack, and much time and patience are devoted to it. A noticeable increase in Enemy “reconnaissance”, such as raids, patrols and ambushes can be a sign of impending attack, but these are unlikely to give any firm indication of where the attack is to be directed as they are likely to step up these activities in a number of places as part of their deception plan. They will go to great lengths to locate minefields, weapon pits and other defenses. Good fire discipline patrolling, deception measures, camouflage and concealment can make their task much more difficult. Most of the Enemy’s reconnaissance activities will be by night, and they employ many ruses to tempt their opponents to open fire and disclose the information sought.

0359. **Planning.** The division commander stresses the importance of allowing enough time to carry out, concurrently, the following tasks:

- a. Reconnaissance of ground and hostile defenses.
- b. Selection of the location and direction of main and secondary attacks, attack routes and objectives.
- c. Preparation of the division for battles.
- d. Initial disposition of troops.
- e. Political indoctrination, specialized training and rest for the troops who will take part.

0360. **Deception.** The division employs many deception measures. Dummy positions, use of smoke and even the tactics themselves are designed to deceive an opponent.

0361. **Deployment.** In preparation for a general offensive, the division usually withdraws to an assembly area between 10 and 15 miles from the FEBA leaving a screen in the original position to engage in intensive reconnaissance activities. In the assembly area, preparations are made for the attack, including a check and replacement of weapons and equipment and regrouping of units. A typical movement forward from

a divisional assembly area might be as follows:

- a. Regiments moves forward during the night preceding the attack into regimental assembly areas where they lie up during the hours of daylight which follow. These assembly areas are from four to six miles from the FEBA and are chosen with regard to routes forward and concealment.
- b. Immediately after nightfall battalions move forward to battalion and company assembly areas which are usually between 1,000 and 2,000 meters from the hostile forward positions. Troops arrive in these areas between two and three hours before the time of the attack and again check their equipment and weapons. Sub-unit commanders are given specific objectives at this stage. Platoon commanders and NCOs are briefed on their immediate objectives, but they received only limited information about the general tactical situation.
- c. Companies normally move forward in single file preceded by three to five scouts to forming up places when they adopt assault formations. Movements are timed so that all sub-units engaged in the assault arrive at their lines of departure simultaneously.

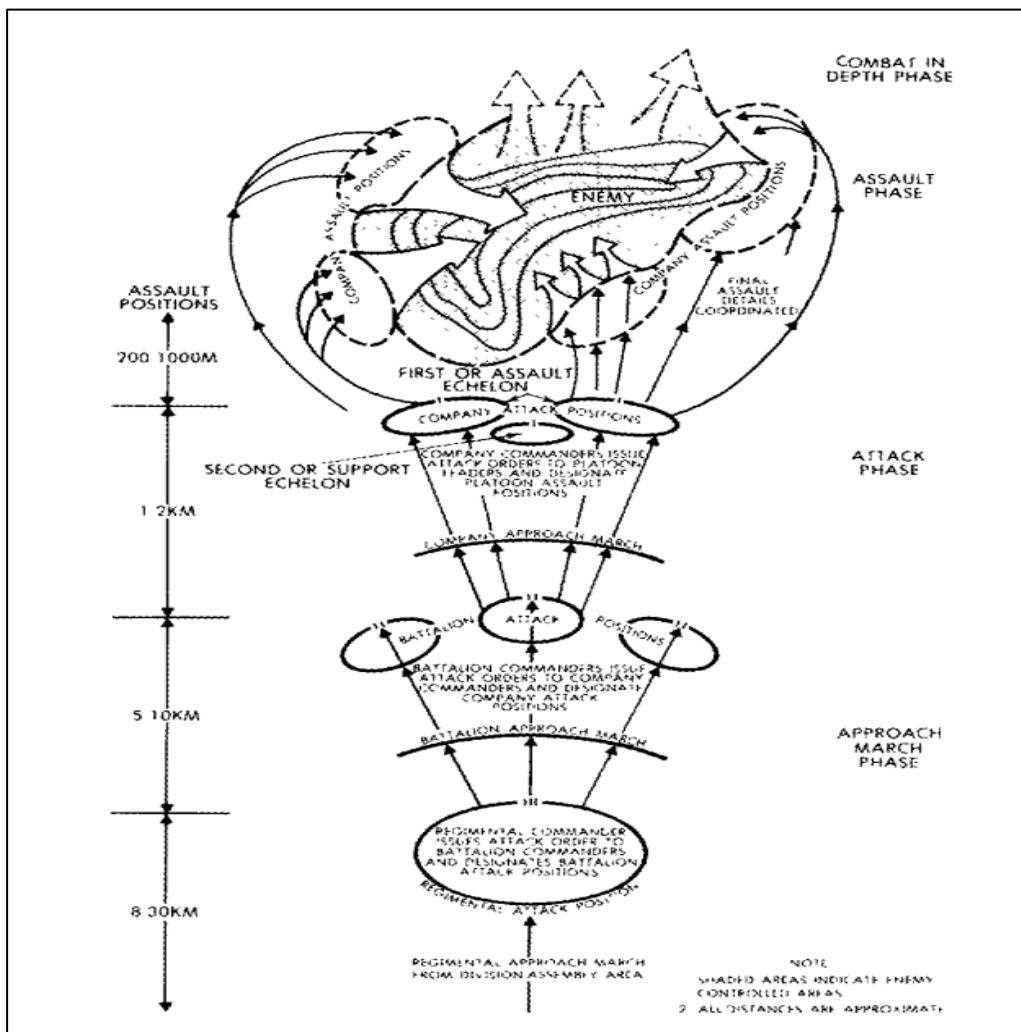


Figure 3.6 – Illustration of a regiment-size deployment

0362. **Line of Departure.** Enemy doctrine stresses that the line of departure should

be as close as possible to the objective. Several methods may be employed to achieve this:

- a. Extensive sapping.
- b. Night movement.
- c. Daylight movement in conditions of poor visibility.
- d. Concentrated artillery fire on the objective.

0363. Movement to the line of departure is always planned in detail even though it may seem likely that this movement can be carried out without detection.

0364. **Signal Communications.** Before the attack, lines are laid from higher to lower headquarters and from right to left between adjacent headquarters. Plans are made to extend the communications systems along designated axes during the attack. Radio silence is normally imposed until the attack is launched. Moreover, the enemy is currently utilizing its modern wireless communication.

0365. **Preparation Fire.** Movement of assaulting troops to their lines of departure is normally covered by preparation fire using all available artillery and other suitable weapons, including aircraft. However, this fire would be dispensed with if surprise could be achieved by a silent attack. The preparation consists primarily of neutralization and counter battery fire. Its duration depends upon the time required for assault troops to deploy, the strength and nature of hostile defenses and the availability of guns and ammunition.

Conduct of the Attack

0366. **Command and Control.** The division commander retains control by planning in detail the employment of his infantry regiments and battalions and their supporting arms and services. Detailed orders are issued before the attack and compliance with these orders is mandatory. Although this enables strict control of the operation by the division commander, it does so at the expense of flexibility. Subordinate commanders, denied the opportunity of using their own initiative, sometimes fail to complete their mission when situations develop which have not been planned for in the orders. However, with improvements in communication facilities at the lower levels and as junior leaders gain experience, divisional control will probably become less rigid during the course of a campaign.

0367. **Echelons.** At divisional level and below, one or more of the following echelons are employed to add weight and depth to the attack:

- a. The first or assault or attack echelon.
- b. The second or support echelon.
- c. The third or reserve echelon.

0368. The first echelon at each level normally has the task of capturing initial

objectives. The second echelon supports the first, adds depth to the attack and seizes intermediate or final objectives. Reserve echelons are normally assigned specific tasks during the progress of the attack.

0369. **Frontages.** The frontage, which may be allotted a given force, depends upon a number of variables. The following is a guide only to the frontages on which the units indicated can execute a relatively strong attack:

- | | | | |
|----|-----------|---|------------------------|
| a. | Platoon | - | 100 to 150 meters |
| b. | Company | - | 250 to 350 meters |
| c. | Battalion | - | 550 to 750 meters |
| d. | Brigade | - | 800 to 1,600 meters |
| e. | Division | - | 1,900 to 4,500 meters. |

0370. **Objectives.** The division commander chooses tactical objectives, which will help to destroy the opposing forces. In mobile war, objectives are normally prominent terrain features which are not defended in strength by friendly forces but which, when occupied by the attacker, would prevent withdrawal or reinforcement of the surrounded troops. In more static conditions, targets will normally be allied positions, particularly vital ground, whose seizure would facilitate future operations or offer the greatest opportunity to destroy the defenders.

0371. **Battalion Attack.** Except for the frontal assault against a strongly fortified position.

- a. The assault echelon normally consists of small groups of section or platoon strength, armed with grenades and automatic weapons. They maintain close formation, usually arrowhead, and advance under cover of artillery and battalion support weapons. These assault groups take advantage of covered approaches to avoid casualties from hostile DF; their own fire is normally withheld until they are within 200 meters of the opposing forward positions. The grenadiers then attempt to move forward to within grenade-throwing distance. The tactics are not flexible in that the commander rarely changes his line of approach once the assault echelon is committed along it. Heavy casualties appear to be no deterrent.
- b. The battalion support weapons are sited centrally, where they can best cover the advance of the leading companies.
- c. If the leading sub-units fail to reach their objective the support and reserve echelons are committed piecemeal. If necessary, reserves from higher formations are employed and they are committed piecemeal also.
- d. Assault echelons are prepared to follow their own artillery concentrations very closely and to suffer some casualties in order to take full advantage of their own fire. In this way, they get onto the hostile position before the defending troops

have recovered from the effects of the fire. This tactic has, on occasions, created the impression that Enemy troops move within their own artillery concentrations.

- e. On reaching the objective, the assault force will continue to press its attack and exploit beyond the objective, leaving reserve sub-units to consolidate. If the assault force has suffered heavy casualties, reserve sub-units may carry out exploitation.
- f. Enemy troops consolidate rapidly and are formidable diggers. In reasonable conditions a battalion can dig in and provide overhead protection to a depth of 18 inches in one night.

Attack on Strongly Fortified Position

0372. A strongly fortified position may consist of a single locality, or an extensive group of fortified localities providing mutual support. Since the same doctrine applies to both, consideration will be confined to the reduction of a single fortified locality, a task that might be given to a regiment or a battalion.

0373. The enemy attack pattern will be an assault on a narrow front against a weak point (if one can be found during their careful and detailed reconnaissance) backed by the strongest possible fire support. It may begin with several days of heavy fire by artillery, and repeated air attacks. This preparation will be augmented in the immediate pre-assault phase by intensive neutralization of the objective. Close-up guns, mortars and SP guns smash individual posts. Assault units will be organized into special teams, with their composition very carefully tailored to their tasks. If penetration is successful, reserve units will quickly exploit it.

0374. An assault company will normally be organized into the following teams:

- a. **Demolition Team.** This is composed of a section or platoon (depending on the amount of demolition work to be done) plus engineer troops with explosives and other engineer equipment according to the task (ladders, wire cutters, Bangalore torpedoes, etc.). This team goes first with the support of the artillery and its own and the fire support teams weapons. Its task is to breach obstacles and clear a path for the assault team, after which it joins the assault team and may deal with strong points and bunkers.
- b. **Assault Team.** Organized from a rifle platoon, this team is equipped with sub-machine guns and grenades. It has a 60mm mortar and/or heavy machine guns for fire support. The assault team moves off from a line of departure as close as possible to the hostile positions – the enemy likes to get within 200 meters or closer, even if this involves days of sapping and the risk of casualties from his own artillery fire. He prefers this risk to hostile DF and tries to get in with his assault team before DF is brought down. The team will probably be sent into the assault in successive waves of 8 to 10 men. The demolition team, having breached the obstacle, follows the assault team through the gaps and onto the objective, and then to the second objective if one has been allotted.

- c. **Fire Support Team.** This team provides direct fire support for the assault team. Its weapons will be 60mm and 82mm mortars, recoil-less rifles, possibly one or more of the regimental howitzers, and the rifles of expert riflemen.
- d. **Reserve Team.** This team is similar in organization to the assault team. It is the commander's reserve. If the assault team reaches its objective, the reserve team wastes no time in pushing forward and through the assault team for exploitation. If the assault team fails in getting to its original objective, the reserve team either takes over or is committed to assist the assault team.

0375. After successful penetration by an assault company, other companies, organized in the same way, are committed in quickly to destroy the entire position, using the same tactics.

Artillery Support in Attack

0376. For a deliberate attack the preparation fire will normally be intense, and provided the ammunition is available, it will normally be prolonged. In an attack on the regimental scale, support will usually be provided during the preparation period by organic artillery of the division augmented by fire from the army artillery regiment and artillery support and destruction groups. During the assault phase, any available self-propelled (SP) and close-up guns will be joined in.

0377. The usual pattern is for Enemy artillery to try to destroy field works, command posts and strong points during the preparatory stage. Intense neutralization of the main and secondary objectives follows. The latter is aimed not only at concealing the direction of the main thrust for as long as possible, but also at hindering support to the main objective from neighboring localities. Neutralization of supporting localities, provided troops are not assaulting them, will continue after supporting fire has to be lifted from the main objective. During the assault, self-propelled (SP) and close-up guns will be used to engage individual positions.

0378. Concentrations on the objectives are maintained until the last possible moment, and the Enemy will always try to get their assault troops onto the objective before hostile DF can do too much damage. Their own DF, during the consolidation period, is quick into action, simple and effective. Forward observers are well forwarded to provide any support required during exploitation or pursuit.

0379. An example of the pre-H hour stages of preparation fire for a deliberate attack is illustrated in the following table. The nature and duration of such preparations will depend on the strength and type of allied defenses, the depth of such positions, ammunition supply and other factors. The long-range artillery group normally does the counter battery fire tasks and the fire in depth against headquarters and reserve areas. Counter battery fire has not in the past, been particularly effective, as the enemy have usually had the disadvantage of hostile air domination:

Table 3.1 – An example of the pre-H hour stages of preparation fire for a deliberate attack

Time (a)	Arty Fire (b)	Action by Inf (c)
H - 68 to H - 67	Rapid and concentrated neutralization fires.	Approach to line of Departure completed by H - 15. Approach as close to objective as possible.
H - 67 to H - 43 H - 43 to H - 33	Destruction. HOWs suspend fire, guns and Mortars continues.	
H - 33 to H - 8 H - 8 to H - 1	Destruction. HOWs fire in depth, guns and Mortars continues.	
H - 1 to H + 1	Rapid and concentrated neutralization.	Infantry assault after one minute of concentrated fire.
H + 1	Extend neutralization barrage in depth. Ranging for DF.	Assault.

Armor in Support of Infantry in the Attacks

0380. The Enemy has not had wide experience in the techniques of infantry/armor cooperation in battle. However, the succeeding paragraphs discusses how armor is utilized.

0381. Special sections of infantry are detailed and placed under command of each tank commander. Their main task is to protect the tank and they frequently ride on it.

0382. Reconnaissance by the tank commander before a deliberate attack in which armor is involved follows the standard pattern of thoroughness. Tanks normally move into position at night. The noise is drowned by gunfire.

0383. Allocation of armor in support will, of course, vary in scale according to many factors, but a typical example is a tank company (13 tanks) allotted to an infantry regiment.

0384. Tanks will generally advance under the final stage of the artillery preparation, passing through the infantry line of departure. A normal attack formation in open country would be tanks advancing 200 meters or so ahead of infantry assault units or sub-units. If in open country, the infantry is held up the tanks press on to destroy the weapons pinning down the infantry. In close country, infantry/tank cooperation more closely resembles our current techniques.

0385. Enemy doctrine does not provide for tanks to remain in support of infantry, on or near the objective, during the reorganization and consolidation period. Their tanks normally move off the objective without delay. They rendezvous well clear of the objective unless committed to immediate pursuit, to planned exploitation or to repelling

an immediate counter- attack.

The Defense

0386. The purpose of defense is to gain time to prepare for the counter offensive while preserving their own forces. To impress upon their commanders at all levels the need for retaining initiative to facilitate the counter offensive phase; the Enemy defines defense phases as intermediate stages in the overall offensive aim.

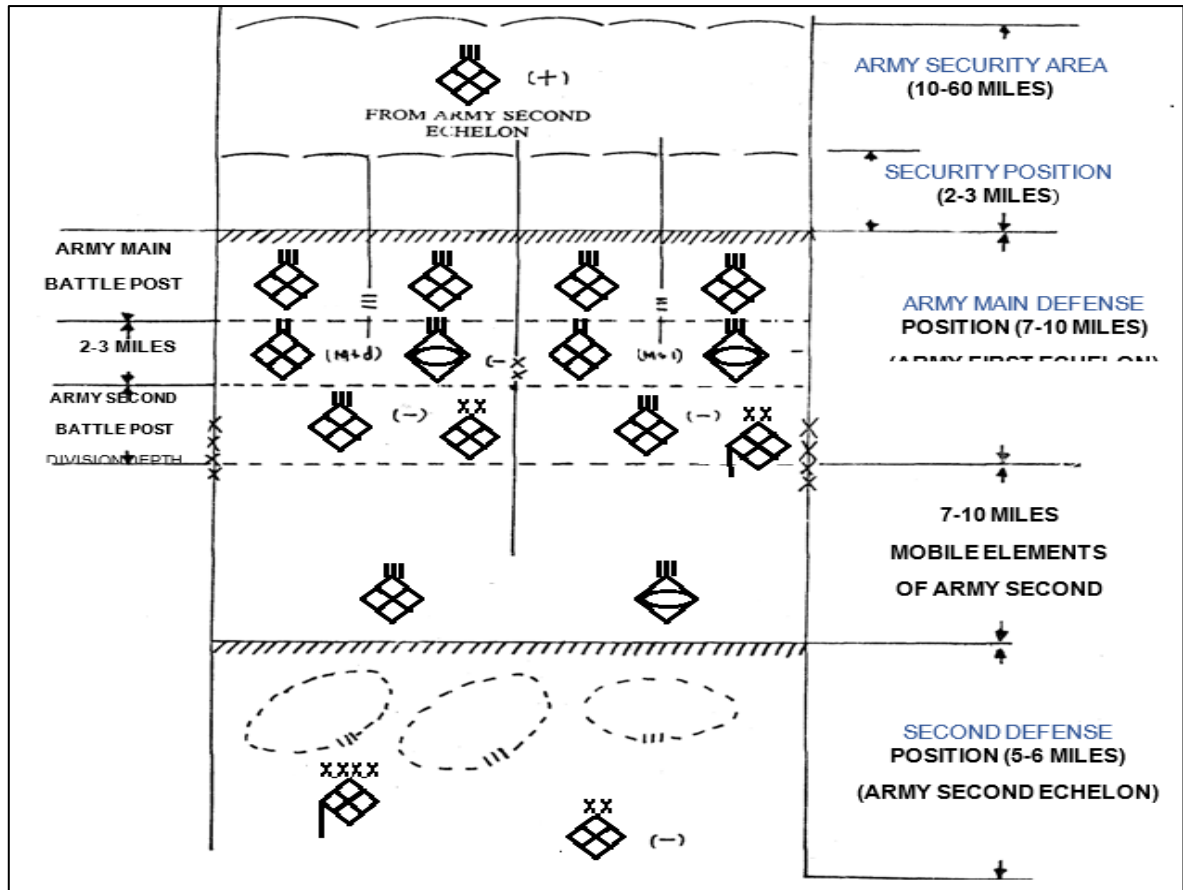


Figure 3.7 – Example of an Enemy’s Army Group in a defense

0387. Broadly, two types of defense are employed – Mobile Defense and Area Defense.

Mobile Defense

0388. Mobile defense is an Enemy tactic developed from mobile warfare experiences. It is a “hit-and-run” type of defense normally conducted as a series of defense/withdrawal actions by hard-hitting mobile forces which take advantage of every opportunity to inflict casualties on the opposing forces without undue loss to themselves. It depends for its success mainly upon coordination, surprise, deception and aggressiveness.

0389. The commander of an enemy large formation may order a portion of his force to conduct a mobile defensive operation to give his main force time to prepare a counter

offensive or an area defense. The tactics of mobile defense may also be used to draw an opponent away from a vital area or to lure a friendly force into a large-scale ambush.

0390. In this type of defense, successive positions are chosen, if possible, sufficiently far apart to force an opponent to reorganize and re-deploy in order to attack each in turn. In selecting them the commander would consider, in addition to the normal requirements of a defensive position, his eventual need for covered withdrawal routes. These positions would also be used to coordinate the action of the various groups constituting the force.

0391. The period of time for which each main position must be held would be laid down by the force commander and the action of sub-commander would be governed by these timings. Sub-commanders normally select a series of delaying positions within their areas through which they leapfrog their subordinate formations or units to hold up the opposing forces as long as possible. These leapfrog movements are not necessarily rearwards but may be to rear and flanks to avoid heavy contact, while the opposing unit or formation advances and exposes its rear and flanks to the Enemy defending forces.

0392. A division normally forms groups of all arms based on the infantry regiments, allotting them artillery support groups, tanks, anti-tank guns, engineers, signal and motor transport as available and as required by the situation. Further fire support would be provided by the long-range artillery under divisional control.

0393. The division is normally deployed with two regiments forward, but in some circumstances, it may be "three up". At all other levels from company to army it is customary to deploy on a "one up" basis. By this means a strong reserve is maintained at most levels and an opportunity for rest is afforded to troops who have been withdrawn from the previous position. The wider deployment of the division enables an army to maintain a reasonably wide frontage.

0394. Security detachments are placed forward of each defensive position to harass and delay the opposing forces as well as to provide early warning. These detachments are normally larger than in area defense.

0395. Enemy sub-commanders can use their initiative to a considerable degree to inflict casualties on the friendly forces. However, tight control is maintained over each withdrawal phase and action is coordinated at the level necessary to preserve the integrity of the force. Withdrawals are made at night, if possible, using normal Enemy tactics.

0396. Essential supplies are either dumped in small quantities along withdrawal routes to be picked up as units fall back or dumped in larger quantities behind each defensive position before occupation. Instead of destroying dumped stocks, which cannot be evacuated, these are often buried or camouflaged for use by troops returning to the area during a later counter offensive.

0397. If, during the operation, the friendly forces show signs of exhaustion or disorganization, the divisional or the army reserve may counterattack. A successful counterattack in such circumstances may lead the Enemy to commence a counter offensive. Otherwise, the stepping back process continues until the purpose of the

mobile defense operation is achieved or until they retreat to their main force deployed in area defense.

Area Defense

0398. Area defense is highly organized in great depth and is employed by the Enemy to deny vital areas to the friendly forces or to hold a superior friendly force while preparing for a counter offensive. Unlike mobile defense, it is based on firm resistance without withdrawal.

0399. At army and higher levels, the defense is organized in three areas or positions.

- a. The Security Area, in which security forces deploy in a role similar to our covering troops. At army level this role may be allotted to a group of all arms based on an infantry regiment. The security detachments of lower formations will also be in the security area.
- b. The Main Defense Position, which consists of a main and second battle position corresponding, at army level, to the divisional main and depth positions, respectively.
- c. The Second Defense Position, which is occupied by all troops not otherwise committed.

03100. At divisional and lower levels, the defended area is divided into three positions.

- a. **The Security Position** occupied by elements deployed forward of main position by each level of command with roles providing early warning and deceiving and delaying the friendly forces.
- b. **The Main Position**, in which the bulk of the enemy commander's troops are deployed, and which consists of the main and depth positions of the subordinate formations or units. This position is organized in depth as a continuous belt of mutually supporting strong points or localities across the frontage.
- c. **The Depth Position**, the purpose of which is to stop deep hostile penetration; provide a firm base to support counter attacks and provide rear area security. At divisional level, the forward edge of the depth position is usually located 4,000 to 6,500 meters behind the forward edge of the main position. The strong points or localities will normally be located on reverse slopes. Alternative positions from which fire may be brought to bear forward will also be prepared.

03101. At all levels, the enemy commander divides his forces into two echelons. The first echelon is deployed in his main position, the second echelon provides troops for the security and depth position.

03102. Enemy doctrine lays down that, in selecting and laying out his defensive position, an enemy commander should consider the following six basic factors:

- a. The expected direction and strength of an attack.
- b. Ground of tactical importance.

- c. Capabilities and limitations of available firepower.
- d. Use of natural obstacles and available means to improve or supplement them.
- e. Fields of fire and observation.
- f. Natural cover and concealment.

Frontages and Depths

03103. The enemy commander allots frontages and depths to his subordinate formation and units. On occasions, enemy commander may even specify the boundaries for key battalion defense areas. In general, the frontage of an allotted area is determined by terrain, hostile forces capabilities and the importance of the area to be defended: the more vital the area, the narrower the frontage and the greater the depth.

03104. As a guide, the following table sets out average frontage for various formations.

Table 3.2 – Average Frontage for Various Formations

Formation / unit	Area Defense (meters)		Mobile Defense (meters)
	Normal Front	Wide Front	
(a)	(b)	(c)	(d)
Battalion	1,000 to 2,000	5,000	2,000 to 4,000
Brigade	3,000 to 4,000	8,000 to 12,000	5,500 to 8,000
Division	8,000 to 12,000	16,000 to 40,000	16,000 to 24,000
Army	16,000 to 40,000	40,000 to 80,000	32,000 to 72,000

03105. The depth of the area which could be allotted to a formation or unit, varies too much for average figures to be given. In allotting areas to his subordinates, the commander would consider such factors as:

- a. The frontage and depth of his own area.
- b. The ground.
- c. The importance of features next to his area.
- d. His strength and support available.
- e. The strength of the opposing forces.
- f. The requirement for dispersion.

Counterattack

03106. The Enemy will counterattack to regain key position within the defense area. They will also counterattack any penetration freely and vigorously if they consider their opponent is susceptible to casualties to men or materiel. These counter attacks are in accordance with their policy of aggressive defense and make full use of mobility.

03107. The Enemy will take advantage of any vulnerability revealed by the attackers at any stage of their attack. An example of this is their teaching that if the attacker's approach has been disorganized by ground fire or by exhaustion, a counterattack should be made the moment supporting fire lifts and before the attacker has reached the defenses.

03108. Counter attacks may be expected at all level. As with their attack tactics, the Enemy will usually try to employ shock action in from a flank. These attacks will be launched while the friendly forces are reorganizing, at night or when visibility is restricted.

03109. All or part of the divisional reserve may mount a divisional counterattack. These reserves are normally organized as a force of all arms based on the infantry regiment constituting the divisional second echelon. The enemy commander normally retains the prerogative of committing the divisional reserve as a whole. The enemy commander usually retains similar control of the reserves of his regimental commanders.

03110. At divisional level, two counter attacks are normally launched against penetrating hostile elements which have survived increasingly powerful counter attacks delivered at platoon, company and battalion strength by lower echelons. The first is launched by the portion of the reserve under the divisional commander's control in order to hold the penetration. The second is launched by the remainder of the reserve on the order of the enemy army commander to destroy the attackers and restore the main position.

03111. If the purpose of the counterattack is to regain an important position, the action is often planned so that it can be completed by midnight to enable troops to reorganize the defense before daylight.

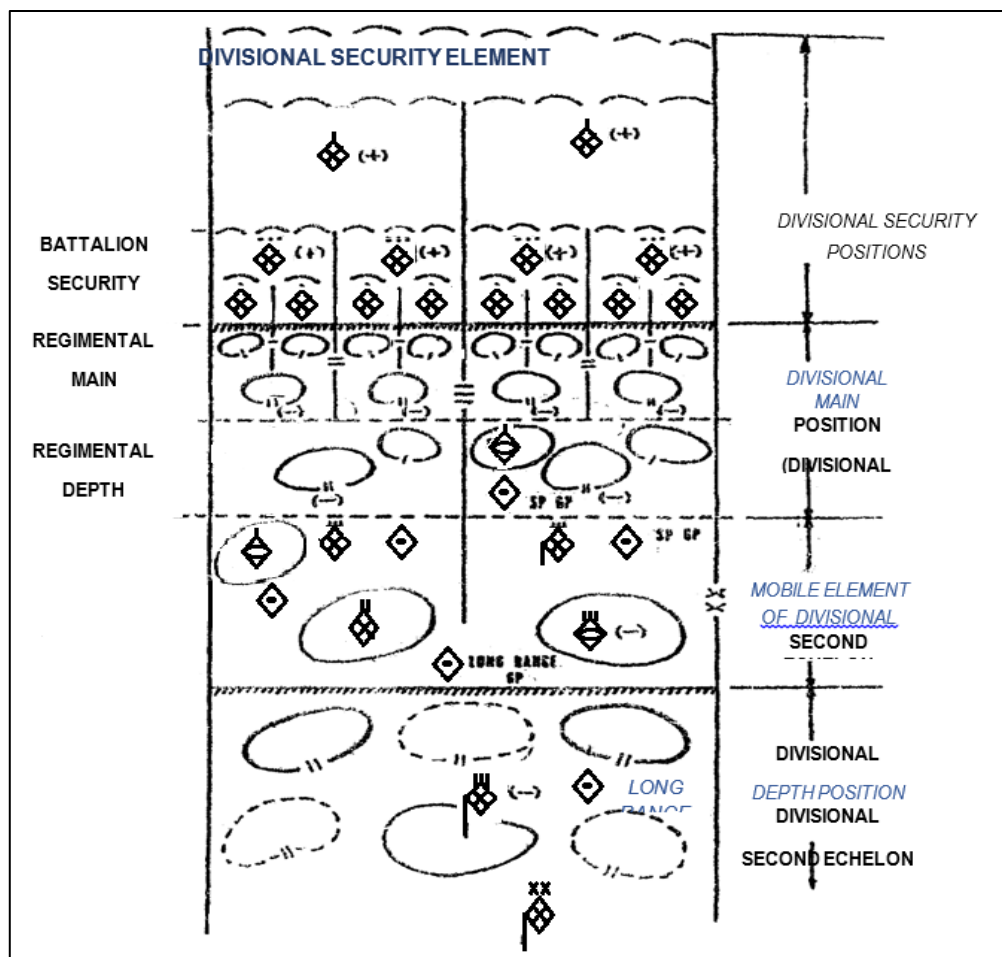


Figure 3.8 – Sample illustration of an enemy in Division in a Defense

Concealment

03112. The Enemy are experts at camouflage. Little use is made of specially prepared camouflage materials or paints, but they use all manners of natural materials effectively. Commanders at all levels place a great emphasis on camouflage during preparation for and conduct of the defense. Strict camouflage discipline is enforced in the main position and realistic dummy positions will be constructed to deceive the opposing forces.

Digging and Tunneling

03113. The extent of the construction of field defenses by the Enemy will be limited only by the time available. A battalion expects to march 30 miles and be dug in camouflage with light overhead protection within 24 hours (first light to first light). Emplacements are dug deep, with sufficient cover to protect occupants from all but direct hits from heavy caliber shells or bombs.

03114. The defenses will be low, strong and dispersed but sited for mutual support. All defenses will be concealed as work progresses.

03115. A complex system of communication trenches is constructed, when possible, in

accordance with the Enemy requirement for mobility in the defense, to allow the rapid movement of the counterattack forces or reserves. Several hundred meters of trenches may be dug on a position in one night.

03116. Alternative and dummy positions are prepared if time permits. These positions will also be constructed forward of the main fortification to add depth to the position and increase space for maneuver. The defended areas will be completed with the construction of dugouts for sleeping, messing and storage.

Obstacle

03117. The Enemy requires defenses at all levels to maximize use of natural obstacles. These will be improved or supplemented by the construction of booby-trapped entanglements, by the laying of anti-personnel and anti-tank mines and by digging, scar plug or demolition.

03118. Mines may be laid at random or in pattern which may vary from regiment to regiment. Anti-tank minefield stops or canalize friendly forces armor and deny unoccupied areas to the friendly forces. Anti-personnel mines are laid in these fields to hinder gapping operations. Mines are also placed in other obstacle such as anti-tank ditches and road craters.

03119. The constructions of minefields, obstacle and field fortification in front of the main position is one of the first priority tasks to be carried out by a division in defense.

03120. Time and manpower permitting, minefields and ditches are combined to form anti-tank barriers in front of, within and between defensive positions.

Infantry Battalion in defense

03121. In area defense, a battalion might be allotted a frontage of 1,000 to 2,000 meters, depending on the ground and the importance of the area. The depth of the battalion area of responsibility might be 1,000 to 1,500 meters.

03122. Each enemy battalion in the main position establishes its own security position, which is located in conformity with the regimental plan. It may be about 2,000 meters forward of the main position but will be within range of indirect fire weapons. The strength of the security detachment will vary with tactical requirements but is usually an infantry platoon reinforced by light and medium mortars, heavy machine guns and anti-tank weapons. Depth is added to the battalion security position by security elements deployed by forward companies. These may be a reinforced section in strength, located 750 to 1,000 meters forward of the main position.

03123. The main position is a series of interconnected strong points or localities organized for all-round defense and mutually supporting to the maximum extent possible. It is designed to destroy the attacking forces by fire in front of, or within, the position. Ground not occupied by enemy troops in fire trenches is controlled by fire, obstacles, and patrols or ambush parties.

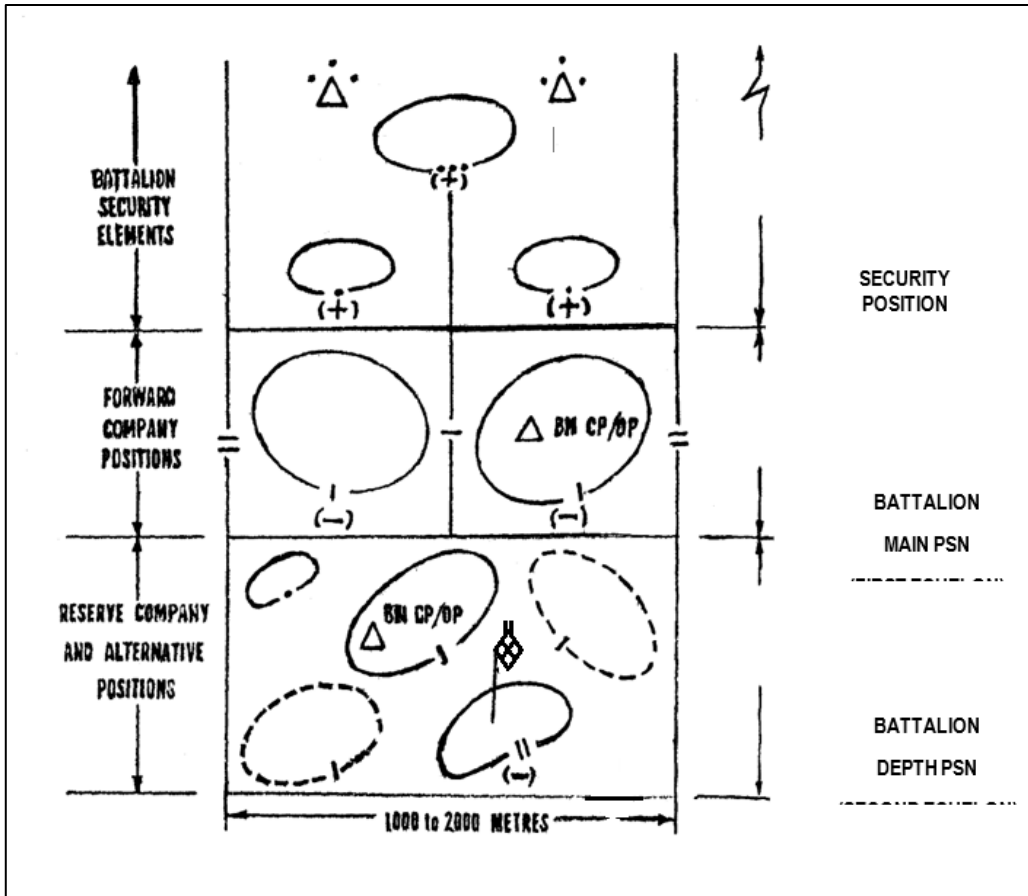


Figure 3.9 – Illustration of an enemy Battalion in a Defense

03124. The second echelon occupies the battalion depth position. It is normally on a reverse slope. Alternative positions are constructed for occupation by the first echelon companies if the main position becomes untenable. The tasks of the second echelon are to provide the enemy battalion counter-attack force, block penetration, protect the battalion' flanks and support the main position by fire. Covered positions and covered routes to points likely to be threatened are provided for the counter-attack elements. Sometimes, tunnels up to a half-mile in length are constructed for this purpose.

03125. All sub-units in the battalion have observation posts. The enemy commander established at least two command/observation posts, one of which will overlook the entire area, if possible, while the other is located in the depth position. If observation is difficult, reconnaissance and standing patrols and listening posts are deployed.

03126. Anti-tank teams, including unit recoil-less rifles, are placed in front of the main position in accordance with the regimental plan. Alternative positions are prepared within the main position.

03127. The enemy battalion commander's fire plan is based on the recommendations of his subordinate and supporting commanders and conforms to the regimental plan. Enemy doctrine requires that each echelon of command, from platoon upwards, prepares plans which ensure the maximum coordination of firepower within itself and with adjacent units. The enemy battalion commander strengthens the firepower of his rifle companies by allotments of battalion heavy weapons. However, he retains rigid

control of any support battalion weapons allotted to the battalion.

03128. The normal priority of work within the battalion is laid down by regimental headquarters. Generally, this would be as follows:

- a. Companies in the main position prepare their strong points giving priority to clearing fields of fire, to weapon emplacements and individual weapon pits.
- b. Heavy weapons detachments clear fields of fire, begin digging emplacements, establish observation posts and install communications.
- c. The battalion second echelon gives priority to the security position but works concurrently on the depth position.
- d. Headquarters elements prepare command and observation posts, install communications and assist in construction throughout the position.
- e. Obstacles, minefields, wire entanglements and administrative works are constructed when essential defense works have been established.

03129. When the position is occupied, the enemy battalion commander establishes a routine to guard against a surprise ground or air attack, to improve the position and to rest his troops while making provision for their political and tactical planning and rehearsals. Emphasis is placed upon alertness at night, when as much as half the battalion's strength may be engaged in manning forward fire trenches, listening posts and ambush positions.

03130. As the security detachments provided by the various levels of command are successively driven in, the attacker encounters increasing resistance and delay. The enemy battalion security detachment with its many automatic weapons supported by artillery fire from the main position can resist strongly. When the battalion detachment is forced to withdraw, the responsibility for maintaining contact with the attacking friendly forces shifts to the company security detachments.

03131. The control of the final 200 to 300 meters in front of the main position is considered crucial in the conduct of the defense. Heavy frontal and flanking fire, therefore, covers this area.

03132. If the attacker penetrates the main position he is fired on from all sides – from weapons located in depth, on the flanks and in strong points in the forward area not overrun.

03133. Each sub-unit of the enemy battalion, from platoon upward, has a counterattack plan to implement when its position is threatened. Counterattacks are normally timed to take advantage of the vulnerability of an attacker when his own artillery support has lifted, and he is trying to close with the defender.

03134. Enemy companies attempt to hold a penetration until dusk so that the battalion commander may launch a coordinated battalion counterattack during darkness. The main attack will normally be launched from a flank. If the penetration is in such

strength that the counterattack is unlikely to succeed, the battalion counterattack may be withheld and the whole reserve used to support the regimental counterattack.

Artillery in Defense

03135. To carry out the enemy commander's DF plan, artillery will be sited to provide long-range and close DF in front of and to the flanks of the area of responsibility. Initially, some artillery may be deployed in support of the forward security position. Positions are selected to provide effective fire at maximum ranges consistent with the security of the guns.

03136. At divisional level, the enemy commander, through his artillery commander, coordinates the fire of his infantry regiments with that of his divisional artillery, tank regiments and other supporting elements available to him from within the division or from higher formations, including air. Fire is organized in depth and planned in detail by the divisional artillery commander for both the main and depth position. The fire plan includes targets within the defensive positions which will be engaged if an attacker penetrates the defense. Planning will include supporting fire for counter attacks.

Armor in Defense

03137. The roles of armor in defense include:

- a. Surprise and spoiling attacks against a hostile force weak in armor, to cause it to deploy prematurely.
- b. Counterattack.
- c. From hull down positions, against tanks supporting opposing infantry.
- d. Assist blocking forces in halting hostile penetration.
- e. Flank protection.
- f. To cover withdrawal of units.
- g. Reinforce ambush units.
- h. Deception.

Withdrawal

The Purpose of Withdrawal

03138. The enemy may withdraw for a number of reasons, frequently by choice even when not forced to do so. Purpose of withdrawal include:

- a. To avoid a superior force attack, preserve combat power and gain time by occupying a more favorable position to the rear.

- b. To avoid defeat if separated from other troops.
- c. To lure the opposing forces into an unfavorable position, leading to their destruction.
- d. To avoid combat.
- e. To permit regrouping.
- f. To shorten lines of communications.
- g. As part of mobile defense.

Preparation for a Withdrawal

03139. Recognizing the vulnerability of a force during withdrawal, the Enemy will, whenever possible, prepare detailed plans and orders for withdrawal. These plans will include details of:

- a. Covering forces
- b. Delaying forces
- c. Fire support
- d. Timings
- e. Routes
- f. Assembly areas
- g. Communications

Types of Withdrawal

03140. The Enemy normally avoids withdrawal in daylight but may undertake a daylight withdrawal when forced to do so by extreme pressure. The recognized disadvantage of a daylight withdrawal is the ability of the friendly forces to observe the movement and to exploit to the full the air power, firepower and mobility.

03141. Night withdrawals are preferred by the enemy as darkness gives the opportunity for secrecy, reduces the mobility and the effectiveness of the firepower of the friendly forces and creates opportunities to deceive and confuse them by small attacks.

03142. **Demolitions.** As the withdrawal progresses, the enemy demolishes bridges and roads. The final demolition bridges and roads are usually made the task of rear guards or flank guards.

03143. **The Withdrawal of a Major Force.** An army or larger formation – may be carried out in three ways. The method used will depend on:

- a. The pressure exerted by the friendly forces
- b. The terrain
- c. The condition of the available routes
- d. The ease or otherwise of cross-country movement
- e. The weather
- f. Help available from the local population

03144. The preferred method of withdrawal for a major force is an initial parallel withdrawal of forward divisions, with centralized control regained some distance, e.g., fifty miles, to the rear. This method, shown in Figure 3.7 of the succeeding page, provides security against a rapid follow-up or envelopment action by the opposing troops, and the ability to concentrate quickly and to employ reserves before the withdrawal has gone too far. Strong rear-guard forces, employing the tactics of mobile defense are required to cover the withdrawal.

03145. A second method of withdrawal, caused by one or more of the factors listed in Paragraph 03141, is movement by subordinate formations on parallel routes directly to the new concentration area. This method, illustrated in Figure 3.7 of the succeeding page, has the disadvantages of prolonging the period before concentration and increasing the difficulty of control.

03146. Thirdly, the withdrawal begins with concentration in areas immediately in rear of forward troops followed by movement under centralized control to the new positions. This method, illustrated in Figure 3.5 of the succeeding page, is considered to restrict freedom of maneuver, to provide the attacker with an opportunity to harass the force before concentration is complete and to increase the danger of envelopment or flank attack.

03147. Each division must provide its own rear guards and covering troops while on a separate route. The withdrawal is coordinated by orders specifying locations where resistance to the hostile advance will be organized by rear guards, and the time for which the positions will be held. Where pressure is severe, reserves may be deployed to form a position through which other defending troops withdraw. The methods of mobile defense are then used until a clean break is achieved.

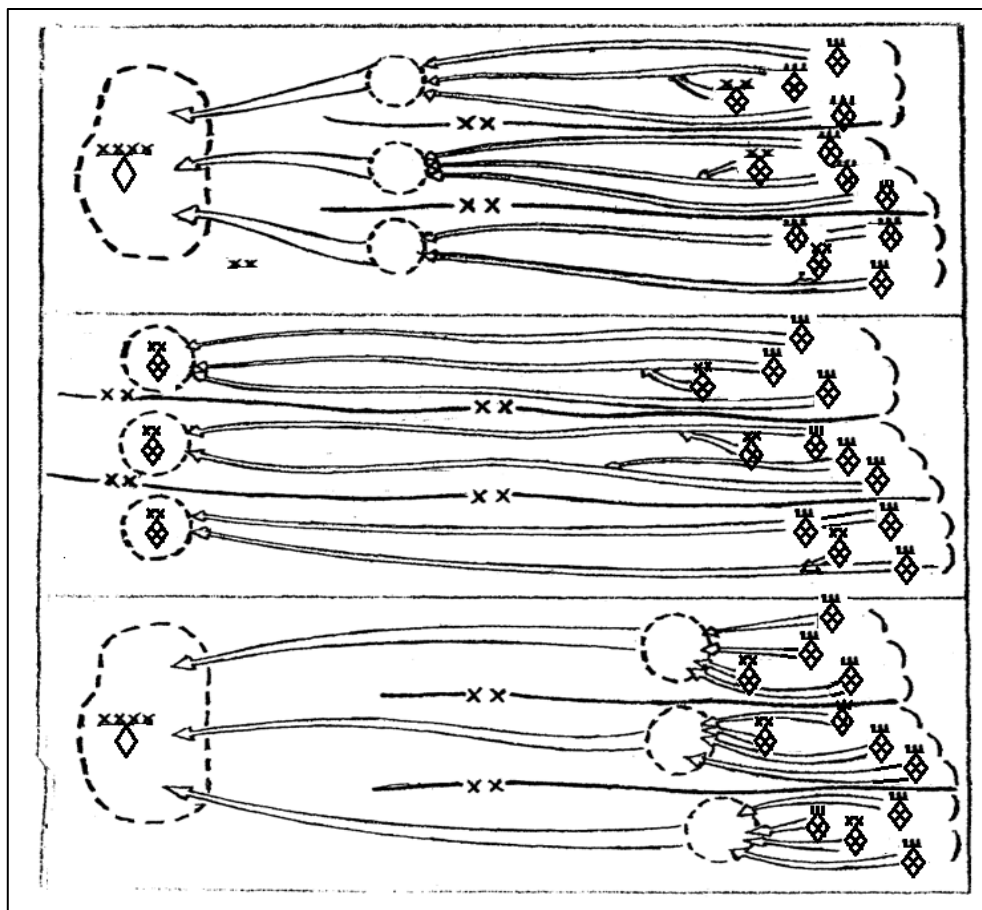


Figure 3.10 – Types of withdrawal employed at Army level or higher

03148. Supplies and rear area troops are often moved out several days ahead of the main force so that route will be clear for combat elements.

03149. Flank security is always provided, where necessary, by flank guards. These are initially strong forces with artillery and, if possible, armored support. Once the withdrawing column is moving along the route, the flank guards may be reduced to light, mobile forces moving parallel to the route ready to warn of, and resist, pursuit.

03150. **The Withdrawal of a Division.** Generally, an enemy division will not withdraw without the orders of the army commander. However, a division or smaller force on an independent task may be withdrawn by its own commander subject to the general instructions of the superior enemy commander.

03151. The withdrawal of a division is covered by deception measures such as increased fire of automatic weapons, increased patrol activity, aggressive attacks by small units in front of the main defensive position and by radio deception.

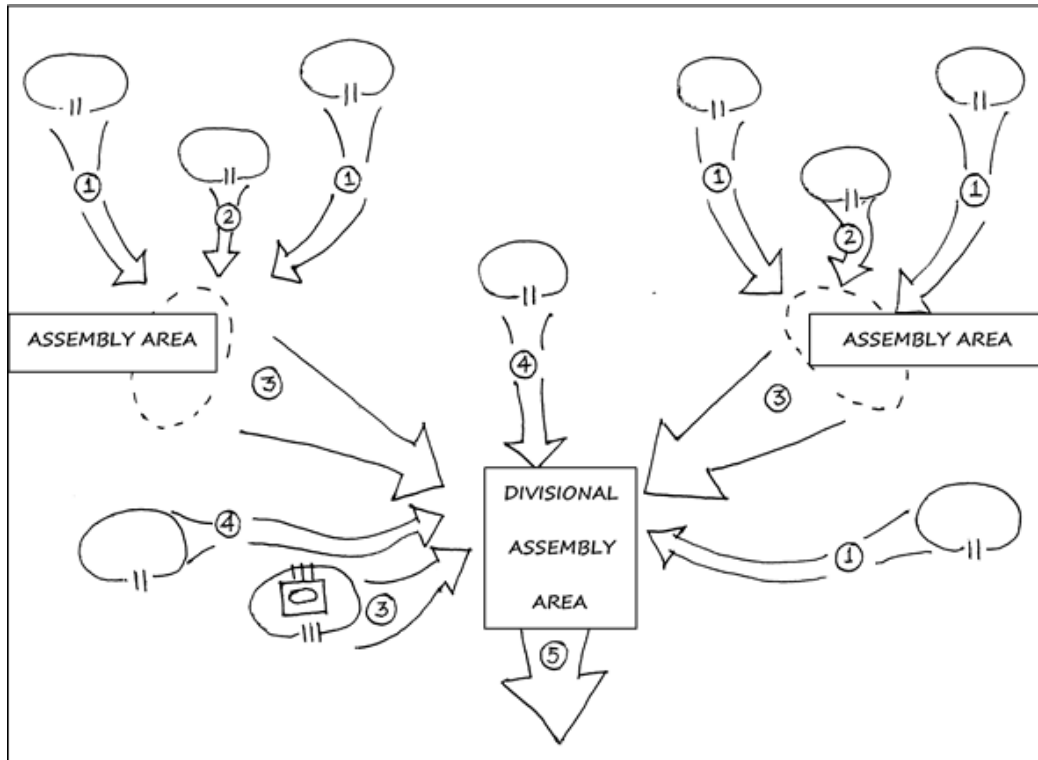


Figure 3.11 – Illustration of an enemy withdrawal of a Division

03152. Normally, the forward regiments holding the main defensive position are withdrawn through the regiment holding the depth position to selected regimental assembly areas. They then move in column to the divisional assembly area. Here the divisional march column is formed and movement to the rear continues.

03153. The rear regiment will then concentrate at the divisional assembly area and move to the rear. This regiment will form the rear guard for the divisional move.

03154. At regimental or battalion level two methods of withdrawal are used depending primarily upon the degree of pressure being exerted by the Allies.

- a. When hostile pressure is light, elements that are least engaged withdraw first, delaying elements being left on the position for security and deception. Such operations are preferably done at night.
- b. When pressure is heavy, covering forces at each tactical level help the disengagement and withdrawal. This method is employed whether the action takes place by day or night. The two methods are considered more fully in the following paragraphs.

03155. **Battalion Withdrawal by Night.** To provide security, an enemy battalion, when it moves, will leave delaying elements. These elements will be allotted additional automatic weapons to increase their firepower. Delaying elements usually consist of a section or a platoon from each forward company.

03156. Battalion heavy weapons, which are located in forward companies, are

withdrawn first – mortars remain in action to cover the withdrawal of forward elements.

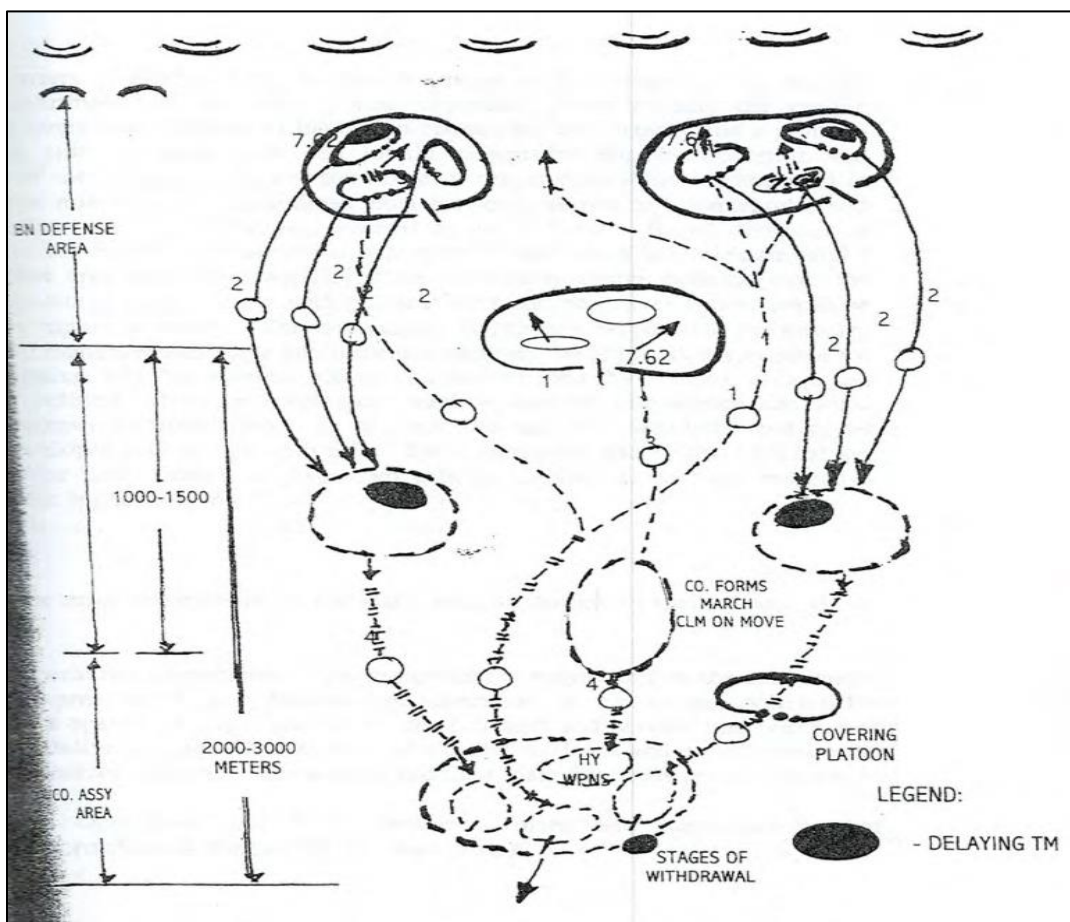


Figure 3.12 – Illustration of a typical enemy battalion withdrawal by night

03157. Forward companies then withdraw simultaneously with platoons on separate routes, leaving behind the delaying elements. The platoons rendezvous in a designated assembly area behind the rear company. Once together, companies move back in column to the battalion assembly area and then on to the regimental assembly area.

03158. Once the forward companies have assembled, the rear company will withdraw, concentrating into march column on the move back to the battalion assembly area.

03159. Delaying elements-continue their deception activities until the last possible moment. Various ruses are employed including ambushes and raids forward of the defensive position. When the time for their withdrawal arrives, delaying elements move quickly from the abandon position. However, if the situation so demands, delaying elements are expected to remain and fire until overrun.

03160. Once a clear break is achieved, foot troops move rapidly to the rear, normally at more than three miles an hour.

03161. A covering platoon will be redeployed if necessary, in front of the battalion assembly area to protect the assembly and march column of the battalion.

03162. **Withdrawal of a Battalion under Pressure.** A battalion withdrawing under

pressure will normally do so within the framework of plans of higher commanders, falling back through the regimental and the divisional depth positions in succession. However, during the early stages of the withdrawal when hostile pressure will probably be greatest, each battalion commander must disengage his battalion relying upon his own resources with only fire support from superior formations. The normal procedure followed in these circumstances is considered in the following paragraphs.

03163. When withdrawing under pressure, in addition to delaying elements, other forces known as 'covering forces' are deployed. The task of the covering force at each level is to give fire support from the rear to forward troops who, in turn, withdraw past it from the rear. The size of the covering force will depend upon the tactical situation but will rarely exceed one-third of the force. It will be composed of a minimum of personnel with the maximum of firepower. It must be able to delay the attackers by fire long enough to allow the main body to withdraw through it. A regiment normally employs its second echelon as a covering force, reinforcing it with tanks, engineers and artillery support. Similarly, a battalion normally employs its second echelon company in this role, deploying it, if necessary, for this purpose. Heavy weapons are withdrawn from forward companies to bolster its firepower.

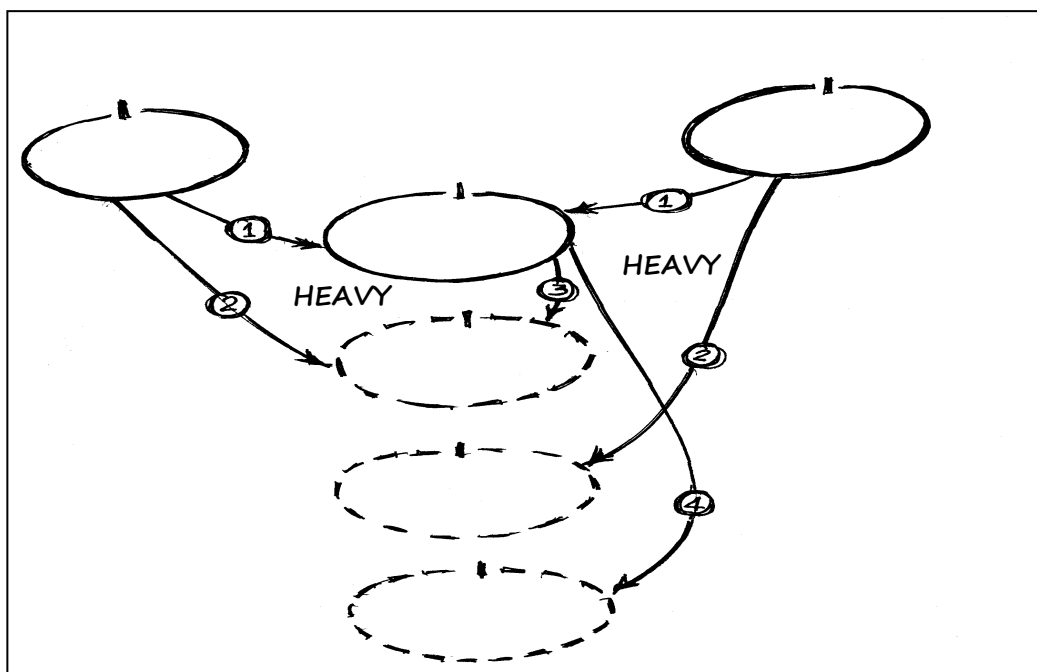


Figure 3.13 – Illustration of an enemy battalion withdrawal under pressure

03164. When the battalion covering force is in position, the forward companies are withdrawn. If necessary, each forward company will make up a covering force its own troops to help its forward platoons disengage. A delaying element is left behind to ambush and delay any follow-up force. Forward companies then take up successive alternative position as illustrated above.

03165. **Armor In withdrawal.** In daylight, armor is used whenever possible to help other elements make it clear break.

03166. At the start of a withdrawal, armor will assist infantry regiments whenever

possible by making strong raids or counter attacks to delay and confuse the attackers. Where such attacks are not possible, tanks will ambush the opposing forces.

03167. On the march to the rear, armor will, suitable terrain, form part of the rearguard and provides mobile flank guards.

03168. **Artillery In Withdrawal.** While enemy doctrine emphasizes firepower to protect withdrawal, they do not willingly risk loss of artillery. Furthermore, once the withdrawal has started, speed of movement is required, and they try to keep roads in forward areas clear for forward units. Therefore, guns are moved to the rear before the withdrawal starts and support from extreme range. Support is also provided by long-range artillery from artillery divisions.

03169. Guns are deployed to support rear guard forces and flank guards as required.

Training

03170. **Individual.** The NRA is engaged in ongoing efforts to find recruits with the requisite combination of mental and physical abilities equal with the new demands of its modernized force structure. More technical school and college graduates are recruited, and the required military service is two years.

03171. Conscription eligibility extends from ages 18 to 22 for males, with females to be inducted according to needs of the units. The minimum educational requirement is middle school graduation. Students enrolled in full-time education programs may be deferred from conscription. The annual quota for the NRA is 2,500 personnel.

03172. Individual training is decentralized to units from independent regiment- and brigade/division-level up to MC-level. Induction and specialty training take place in operational units at training bases and schools.

03173. The NRA categorizes its overall training regimen into several levels consisting of the following: common subject training; specialized technical training; tactical training; campaign training; non-combat action training; and strategic problems research. This formulation recognizes that each level of training provides the foundation for the next higher level, with individual skills as the bedrock for all other training.

03174. Commanders and political officers are responsible for the conduct of basic training. Recruits are organized into companies of about 100 personnel, further subdivided into platoons and squads. Training lasts up to three months. Induction training is divided among military skill, political, and physical training.

03175. **Unit.** Annual unit training tasks are general in nature and include the following:

- a. Basic training for units and headquarters focusing on technical and operational skills;
- b. Tactical and technical/professional training in complex environments and for non-war actions;

- c. Training to develop systems of "systems combat capabilities under informationalized conditions";
- d. Organization for inter-theater (inter-region) operations;
- e. Continuing reform of professional military academics and schools; and
- f. Improving training support and evaluation to make training more realistic.

03176. Each MC provides guidance for the length of the training cycle, live ammunition exercises, and other exercises for the units. The commanders and their staff from group army level downwards prepare and execute annual training plans.

03177. Each unit is often assigned with a specific topic for experimental training in order to refine tactical procedures. Examples are close air support, high altitude, and logistics operations. Tactics developed through training are then disseminated across other NRA units.

03178. Units adopt progressive training wherein small unit functions are practiced first, proceeding to larger and more complex exercises with the use of multiple arms and services. For example, units conducting amphibious exercises first train in individual skills such as swimming, driving vehicles, and loading transport vehicles. Afterwards, platoons and companies conduct movements over water and assault on the beach by small units. Battalions and larger exercises follow, including fire support, electronic warfare, and integration of logistics support. Live fire drills are usually held at the last part of the exercise cycle.

03179. **Specialized.** Methods to conduct specialty technical training include classroom lecture and study, individual practice, use of simulators and team/crew work. Specialty technical training may be conducted in units through on-the-job training, formal schools and academies, and at a number of training bases operated by units at and above regimental level and by individual services. Policies vary among the services depending on the type of specialty technical training.

03180. Special Training with the Blue Army (OPFOR) Units. The term "Blue Army", refers to specialist opposing force (OPFOR) units which are unofficially used by the NRA, and are tasked to don the role of enemy troops during exercises to test the capability of the NRA troops to counterattack OPFOR. The force structure, tactics, strategies, doctrines and weaponry of the Blue Army are similar to that of the real enemy forces to provide simulation.

Combat Effectiveness

03181. DROC is very particular in picking the members of its troops. The uneducated and peasants are less entertained. The recruits mostly come from families who can afford sending their children to academic institutions. NRA chooses the more physically, emotionally, and psychologically fit cluster of men to become soldiers.

03182. Living conditions of the soldiers and pay are increased, which makes them earn about 20% higher compared with other civil servants of similar level. Military reforms

are also passed to address the issue on corruption of the military admirals and generals. DROC pulled out all of its resources and made necessary adjustments on its military management. Since then, the military personnel have been well taken care of, and loyalty of the soldiers is rewarded.

Air Support

03183. NRA Air Force focuses on the five types of war in support to the ground forces:

- a. Small-scale conflicts restricted to contested border territory,
- b. Conflicts over territorial seas and islands,
- c. Surprise air attacks,
- d. Defense against deliberately limited attacks into Checkian territory, and
- e. “Punitive counterattacks” launched into enemy territory to “oppose invasion, protect sovereignty, or to uphold justice and dispel threats.”

03184. Like the NRA’s other major services NRA Air Force is governed by the rules by the very top of the CMC. Air operational principles stresses the following:

- a. Use of overwhelming force to achieve protection of forces and destruction of enemy forces;
- b. Subservience of military battles to political battles by a strict adherence to CMC operational policy; and
- c. Study and application of NRA Air Force experiences and tactics drawn from different wars.

03185. NRA Air Force follows an operational strategy of “quick reaction,” “integrated coordination,” and “combat in depth”. Quick reaction meant launching an instantaneous retaliatory strike for deterrence, or even survival. Integrated coordination meant allowing the air force to “manage the long-range bomber air groups and oversee the initial stages of joint operations with the other services and between air combat units stationed in different military regions.” Finally, combat in depth meant conducting operations over a wide geographical area.

Naval Support

03186. Checkia’s leaders have embraced the idea that maritime power is essential to achieving great power status. Its NRA Navy supports ground forces through a “non-contact warfare”. Non-contact warfare involves employing platforms and weapons in long-range, precision strikes from outside an enemy’s “defended zone.” The NRA Navy’s commitment to non-contact warfare is demonstrated by its continued acquisition of long-range weapons to be launched from ships, submarines, aircraft, or shore-based platforms as well as the associated detection and targeting capabilities

required to employ these weapons to their fullest capacity.

03187. NRA Navy relies more on unmanned cruise and ballistic missiles than on manned aircraft, and more on submarines than surface vessels. The unprecedented enhancement in recent years capacitated NRA Navy's maritime interdiction, fast missile boat operation, and amphibious warfare.

03188. Checkia's naval strategy has evolved from a limited, coastal orientation, to one that is mission-focused and becoming increasingly unconstrained by geography. Checkia's naval strategy has undergone two major changes: from "near-coast defense" to "near-seas active defense", and then to the advancement of a "far-seas operations" strategy. Despite the advancement of the NRA Navy, the said force remains to focus on the near seas as Checkia was entangled to territorial disputes with other neighboring South East Asian countries.

Rocket Force Support

03189. The creation of the NRA Rocket Force solidified Checkia's missile forces as a critical element of Checkia's evolving strategic deterrent posture, portends continued significant investment in NRA Rocket Force modernization, and points to a more concerted effort to integrate rocket force capabilities into more effective NRA-wide joint operations.

03190. NRA Rocket Force allows ground forces eliminate variables that would hamper its operational mobility during "defense".

03191. The CMC has the primary control in the operations of NRA Rocket Force. Given that most conventional missile strike campaigns are to be executed as part of a larger joint campaign, the Mission Commands are also given organic capability to plan and execute conventional missile operations. Mission commands accomplish this by providing mission command staff with officers who have NRA Rocket Force background, as well as command information systems that have the functionality to pass commands to conventional missile units.

Chapter IV

Sustainment

Battlefield Logistics

0401. In the event of battle, logistics brigades are held at corps level and logistics support is supplied directly to the brigades and battle groups using a “pull system.” Besides military operations, the logistics brigades are tasked to provide logistics support for military operations other than war, which include flood control and resulting rescues, earthquake and disaster relief, nuclear and chemical terrorism, and counterinsurgency operations.

Battlefield Resupply

0402. Most vehicles used for resupply are medium trucks, which are based on various models of state-produced trucks. Resupply near the forward edge of the battlefield has been made easier with the introduction of the tracked armored supply vehicle. This vehicle uses 3 crew members, and the vehicle commander has a 12.7x108 mm machine gun, four twin 76 mm smoke discharges. The vehicle can climb a 32-degree slope and can be on a 25-degree slope without rolling over sideways. The vehicle’s main role is to supply ammunition for forward units.

Base Feeding

0403. The NRA has established messes equipment like electric ovens, freezers, and machines to cater all personnel. The basic daily ration for enlisted personnel and commissioned officers includes fresh fruits and increased proportion of animal protein in the form of dairy, poultry, and seafoods. However during war, MREs are preferred.

Field Feeding

0404. In the field, the NRA have the mobile kitchen vehicles. One vehicle enables 4 cooks to prepare 4 different hot meals and soup for 300 people in less than an hour. More importantly, field water purification, environmental health equipment, and field showers have also been used by the NRA. These systems enable sustained operations without having to depend on the local population for rations of water.

0405. During extended operations away from established infrastructures, the NRA can still perform logistics missions. Priority is supplying personnel with ammunitions, adequate food supplies, modular equipment, and delivery of combat uniforms and personal protective equipment as needed, utilizing high mobility transportation.

0406. The NRA forces on extended operations can also eat without having to forage off the population. Specific cold-weather ration packs are made available and come in self-heating, tinned, and soft packaging. They also use a battery-operated thermostat similar in size to a portable calculator that can be plugged into special heating pouches,

enabling food, such as rice, to be heated up.

Battlefield Engineering

0407. The NRA has an array of vehicles to enable and enhance battlefield mobility. For gaps and river crossings, the NRA employs two types of pontoon bridges: the bridge-laying tank and the truck-mounted scissors-type folding bridge that incorporates built-in pylons. For initial crossings, the NRA has motorized small rigid inflatable boats and an amphibious four-wheel drive vehicle. They also have amphibious tank that enables reconnaissance units to cross river barriers and paddy fields more easily.

0408. The armored bulldozer is used for rapidly breaching minefields and battlefield engineering tasks. It is equipped with a large bulldozer blade in the front and a tray over the rear of the hull that houses the rocket-launched mine-clearing explosive hose system.

0409. To ensure adequate all-weather, high-altitude support, the NRA regularly trains in a simulated extreme weather conditions. The engineers have developed methods for providing support, including a rolling device that almost halves the time it takes to build a bridge, camouflage suited for the terrain, and new front end-loader.

0410. To repair vehicles in the field, the NRA has two vehicles to provide repair facilities for armored vehicles in the forward battle area. Its armored rapid battlefield repair vehicle is designed to provide rapid repair of armored vehicles and quickly bring a stricken vehicle back into operation without an armored recovery vehicle. The vehicle's crew of five has a comprehensive array of tools. It contains automatic oil filtration system, a battery charger, test sets for the target, radio and stabilization systems, and tools to enable rapid entry into the disabled vehicle. Fully amphibious and weighing in at just over 15 tons fully loaded, has maximum road speed of 55 km/h and can travel 6 km/h in water. The vehicle includes a turret-mounted type 59 12.7-mm heavy machine gun in a semi-enclosed turret, eight 76-mm smoke grenade dischargers, and three type 77/85 sub-machine guns for close-in protection. It is a very busy vehicle with a smaller profile than the armored maintenance vehicle.

0411. The armored maintenance vehicle is based on the extended hull of a tracked ambulance and has six road wheels. The vehicle is basically a garage on tracks; the crew can access a comprehensive array of tools, including an arc welder, an air compressor, and a rapid battery charger. Designed to enable field maintenance of armored vehicles during operations in the field, the vehicle have a 1-ton capacity hydraulic crane on the left side of the vehicle and a turret-mounted 12.7x 108-mm heavy machine gun. It is also equipped with four twin 76-mm smoke grenade dischargers. The vehicle is amphibious, weighs 17.5 tons fully loaded, and has a maximum road speed of 60 km/h and a maximum speed of 5 km/h in water.

Battlefield Medical Services

0412. The NRA battlefield services have also been modernized. Currently, there are three stages of medical service before injured personnel is evacuated to a major army medical facility. The medics collect the patients and provide immediate first aid, and

then transport the patients to the battalion aid post where they are stabilized. The patients are then moved to the field or divisional hospital for early treatment of their wounds. The NRA is investing in its battlefield health services with the addition of armored tracked ambulances. The ambulance with the type 85 chassis is armed with a 12.7-mm machine gun, and the type 89, which is fully amphibious, is used to transport wounded personnel to and from landing craft or over water crossings. The NRA also issues individual medical kits for deployed soldiers.

Computerized Procurement

0413. To cut the costs while improving the provisioning of supplies in the field and in base areas, the NRA uses computerized outsourcing and procurement, including tools, stationery, and engineering equipment, directly from the civilian sector. This system pointed the way for future NRA procurement system and is continuously undergoing expansion and improve servicing throughout the NRA.

Mobilization

0414. The NRA keeps most of its most modern equipment in storage for use in a potential war. However, more recent equipment are used in training. Although this ensures that the new equipment is readily available during times of mobilization and further, personnel are familiarized with the modernized equipment. DROC had been robust and gaining progress in its modernization efforts and will likely to continue its pace as the country is gaining dominance in the South East Asian region.

