

Systra Philippines Navotas Feeder Line Meeting with PNR Board

17DEC2025





Project Background - Feasibility Study

Alignment and Station Locations (FS)



Navotas Feeder Express (blue line)

- Bi-directional
- 5.1 km
- 4 stations:
 - Navotas Fish Port
 - C-3
 - Dagat-dagatan
 - 5th Avenue

Navotas Feeder Loop (green line)

- Uni-directional
- 4.68 km
- 5 stations:
 - Navotas City Hall
 - San Jose Parish
 - San Roque
 - Daanghari
 - E. Tuazon

Interchange Station: Navotas Park Station

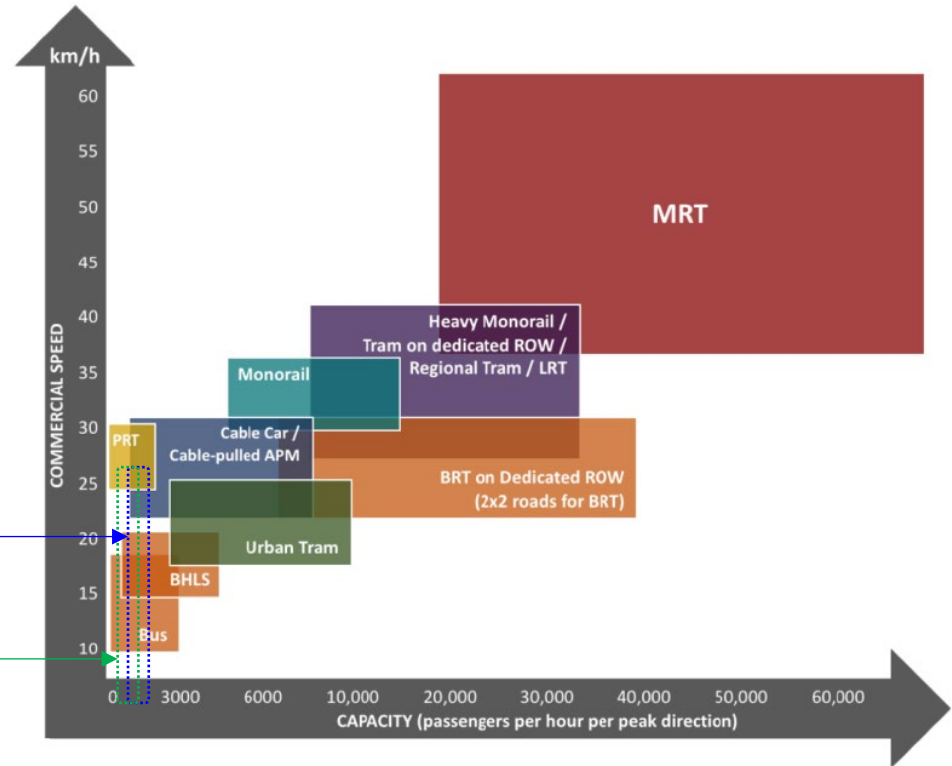
Hierarchy of Transport Systems

The appropriate technology for the project is Bus with High Level of Service (BHLS) on a non-exclusive bus lane



| Navotas Feeder Express | |
|------------------------|------|
| Opening Year PPHPD | 484 |
| Ultimate Year PPHPD | 1256 |

| Navotas Feeder Loop | |
|---------------------|-----|
| Opening Year PPHPD | 213 |
| Ultimate Year PPHPD | 553 |





Detailed Engineering Design

Status Report

Tasks/Deliverables Completed

- Stakeholder's Meeting
- Inception Report
- Value Engineering/ Value Analysis (VE/VA)
- Topographic Survey
- Geotechnical Soil Investigation
- Schematic Design (SD) Package
- PNR Review and Comments to SD Package
- Detailed Design works (per discipline) (Drawings/Reports)
- MPSS (Buses, Signalling, Communications)
- Traffic Management Plan (TMP) preparation
- Environmental Impact Assessment (EIA) preparation
- BOQ and Cost Estimates
- PNR Review and Comments to the DED submission
- Submission of Final DED Drawings and Reports
- Acceptance of the Final DED Drawings and Reports

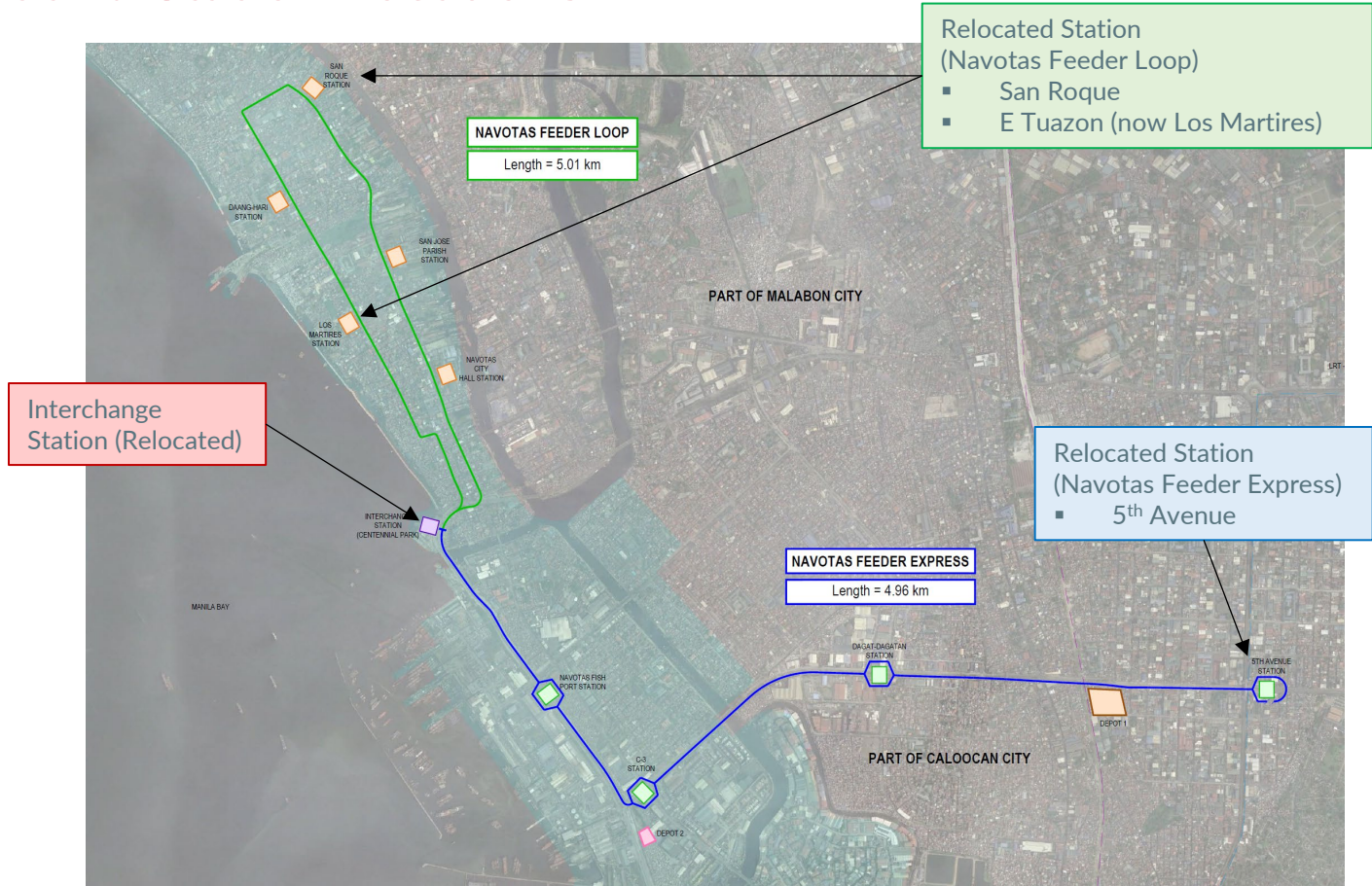
Next in Line

- Processing of Invoice for the DED Drawings/Reports

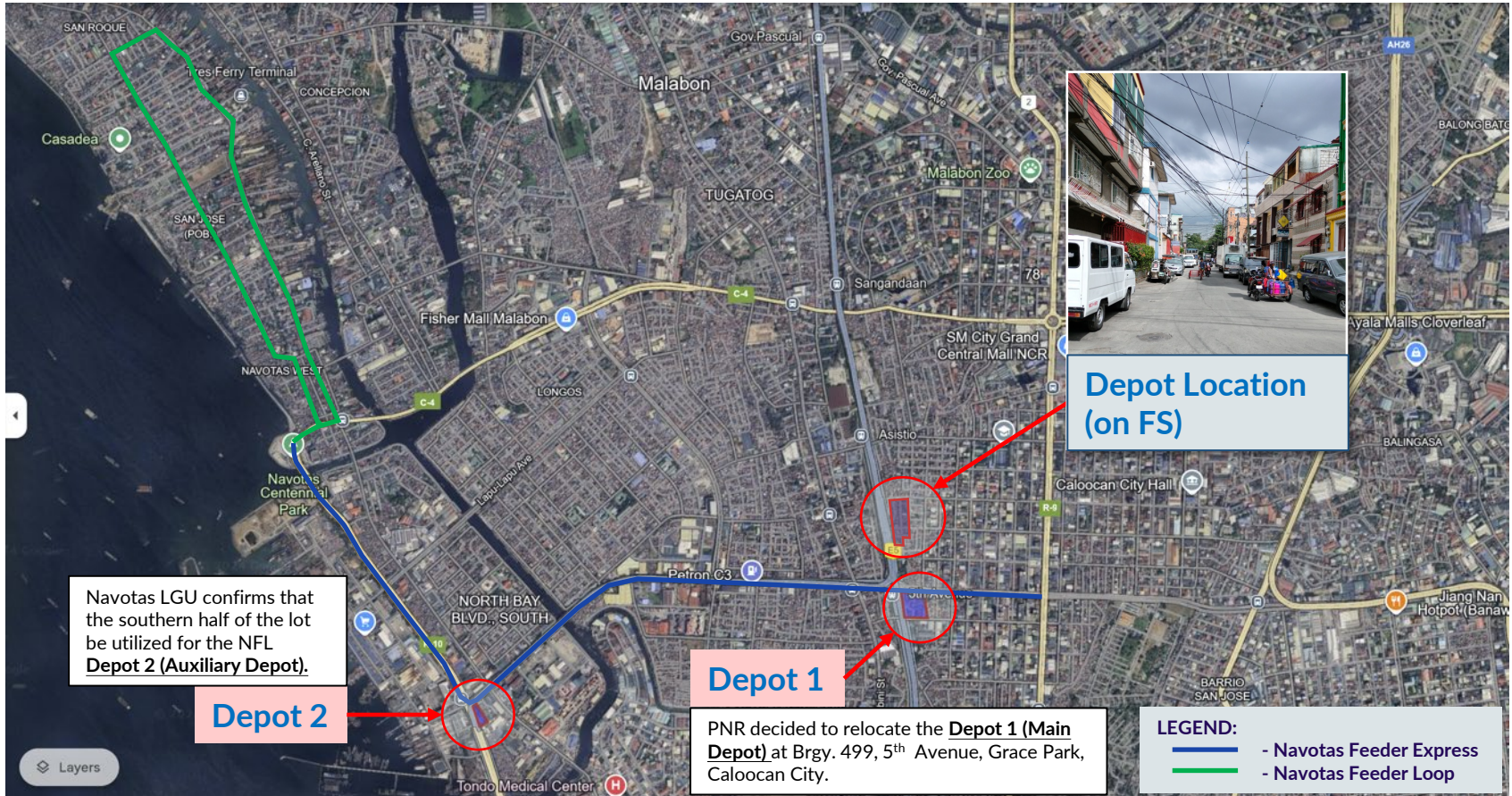
General Alignment and Station Locations

NFL Alignment:

Navotas Feeder Express
(5.0 km)
Navotas Feeder Loop
(4.68 km)



New Depot Locations - Key Plan



Design Renderings – Typical Feeder Express Station (C3)



Design Renderings – Typical Feeder Express Stations (5th Avenue)



Design Renderings – Feeder Express Stations (5th Avenue)



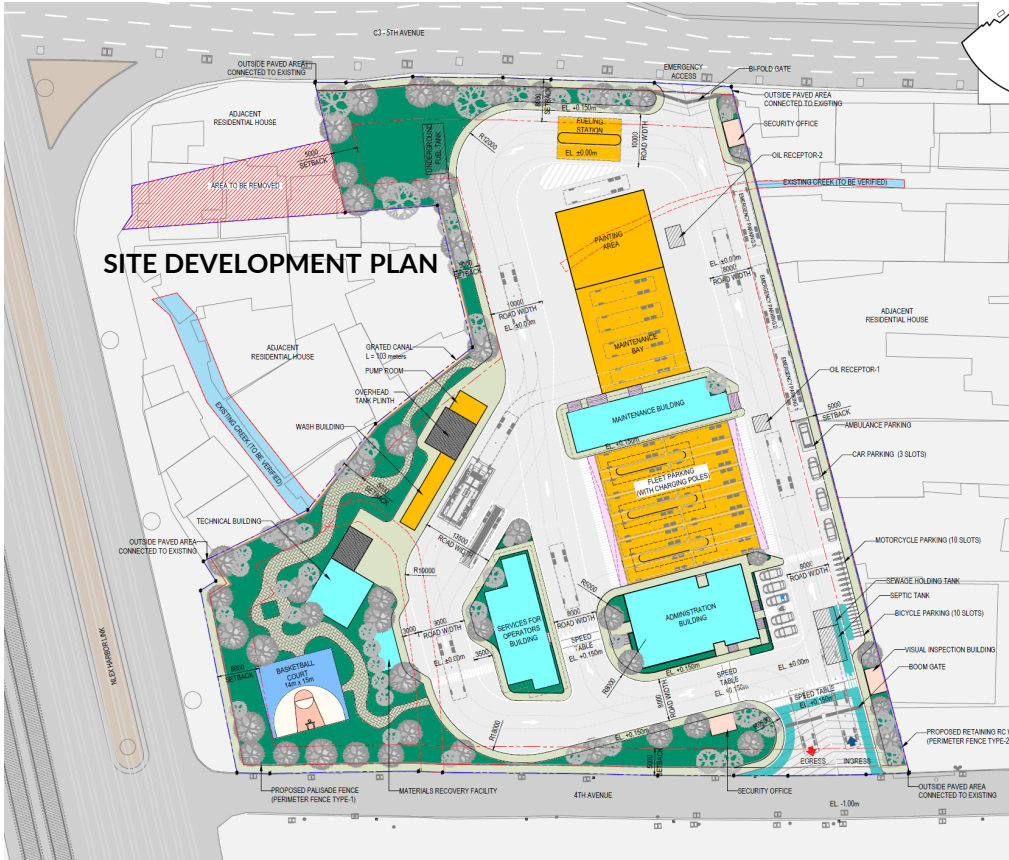
Design Renderings – Feeder Loop Stations (Typical Shed)



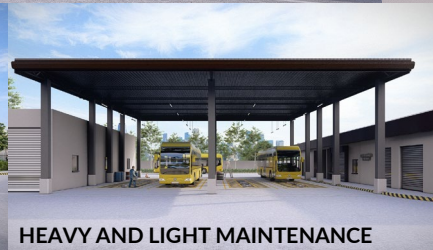
Design Renderings – Interchange Station



Detailed Design – Depot 1 (Main Depot)



Design Renderings – Depot 1 Structures



Design Renderings – Depot 2 Structures



SYSTRA



CONFIDENCE MOVES THE WORLD